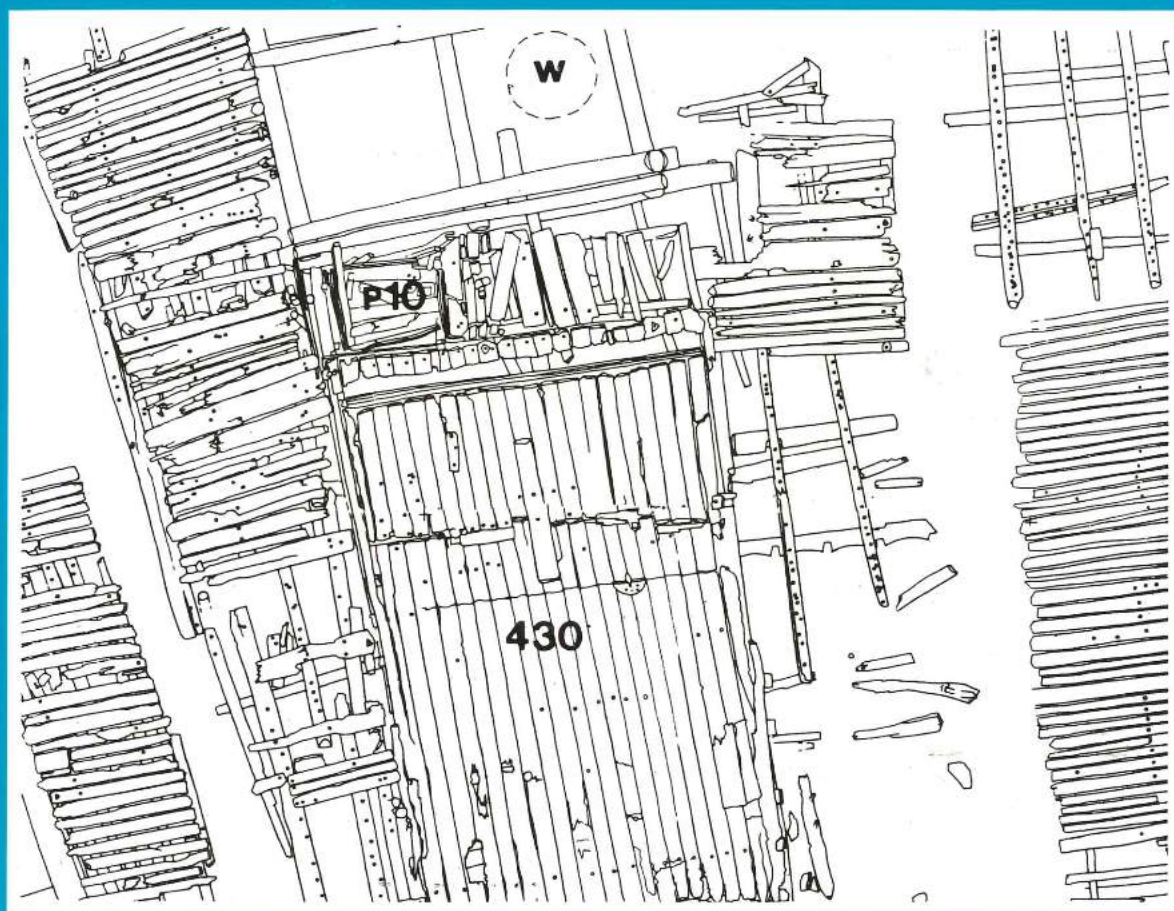


THE BRYGGEN PAPERS

MAIN SERIES · VOL 3, PART 2

PLATES



THE BUILDINGS AT BRYGGEN
THEIR TOPOGRAPHICAL AND CHRONOLOGICAL DEVELOPMENT

Asbjørn E. Herteig

NORWEGIAN UNIVERSITY PRESS

THE BRYGGEN PAPERS

Main Series

THE BRYGGEN PAPERS

Main Series

VOL 3, PART 2

PLATES

THE BUILDINGS AT BRYGGEN
THEIR TOPOGRAPHICAL AND CHRONOLOGICAL DEVELOPMENT

Asbjørn E. Herteig

NORWEGIAN UNIVERSITY PRESS

© UNIVERSITY OF BERGEN 1991

Enclosure to ISBN 82-00-21117-7

Published with a grant from the Norwegian Research Council for Science and the Humanities and the Historical Museum, the University of Bergen.

Distribution office:
Norwegian University Press
P.O. Box 2959 Tøyen
N-0608 Oslo 6, Norway

Printed in Norway by
John Grieg Produksjon A/S, Bergen

CONTENTS

Plate 1

Phase 9.2, burnt in 1955.

Plate 2

Phase 9.1.2, unburnt level under the 1955 fire.

Plate 3

Period 3, burnt in Fire I, 1702.

Plate 4

Period 7, burnt in Fire II, 1476.

Plate 5

Phase 6.2, burnt in Fire III, 1413.

Plate 6

Phase 6.1, with Phase 6.1.2 in The Old Church Road and Row 1.

Insert: Extra level between 6.1.2 and 6.1.1 in the passage between Buildings 438 and 94 (Rows 1 and 2) in grid-square O.

Plate 7

Phase 5.2, burnt in Fire IV, 1332.

Insert: Lower level of passage in the rear part of the site SE of Building 12.

Plate 8

Phase 5.1, unburnt level under Fire IV.

Plate 9

Phase 4.2, burnt in Fire V, 1248.

Plate 10

Phase 4.1, unburnt level under Fire V.

Plate 11

Phase 3.2, burnt in Fire VI, 1198.

Plate 12

Relationship between St Mary's Church Road and the church of St Mary's, c 1250.

Plate 13

Phase 3.1, unburnt level under Fire VI.

Plate 14

Phase 2.2, burnt in Fire VII, 1170/71.

Plate 15

Phase 2.1, unburnt level under Fire VII.

PHASE 9.2 PLATE 1

THE GULLSKOEN CHRONOLOGY

| Fire | Date | Fire Interval Period | Building phase |
|------|-----------------|----------------------|----------------|
| 0 | 1850 | | |
| I | 1792 | 9 | 1 |
| II | LOCAL FIRE 1852 | 8 | 2 |
| III | 1876 | 7 | 3 |
| IV | 1913 | 6 | 4 |
| V | 1932 | 5 | 5 |
| VI | 1948 | 4 | 6 |
| VII | 1190 | 3 | 7 |
| VIII | 1170/71 | 2 | 8 |
| | Pre-1170 | 1 | 9 |

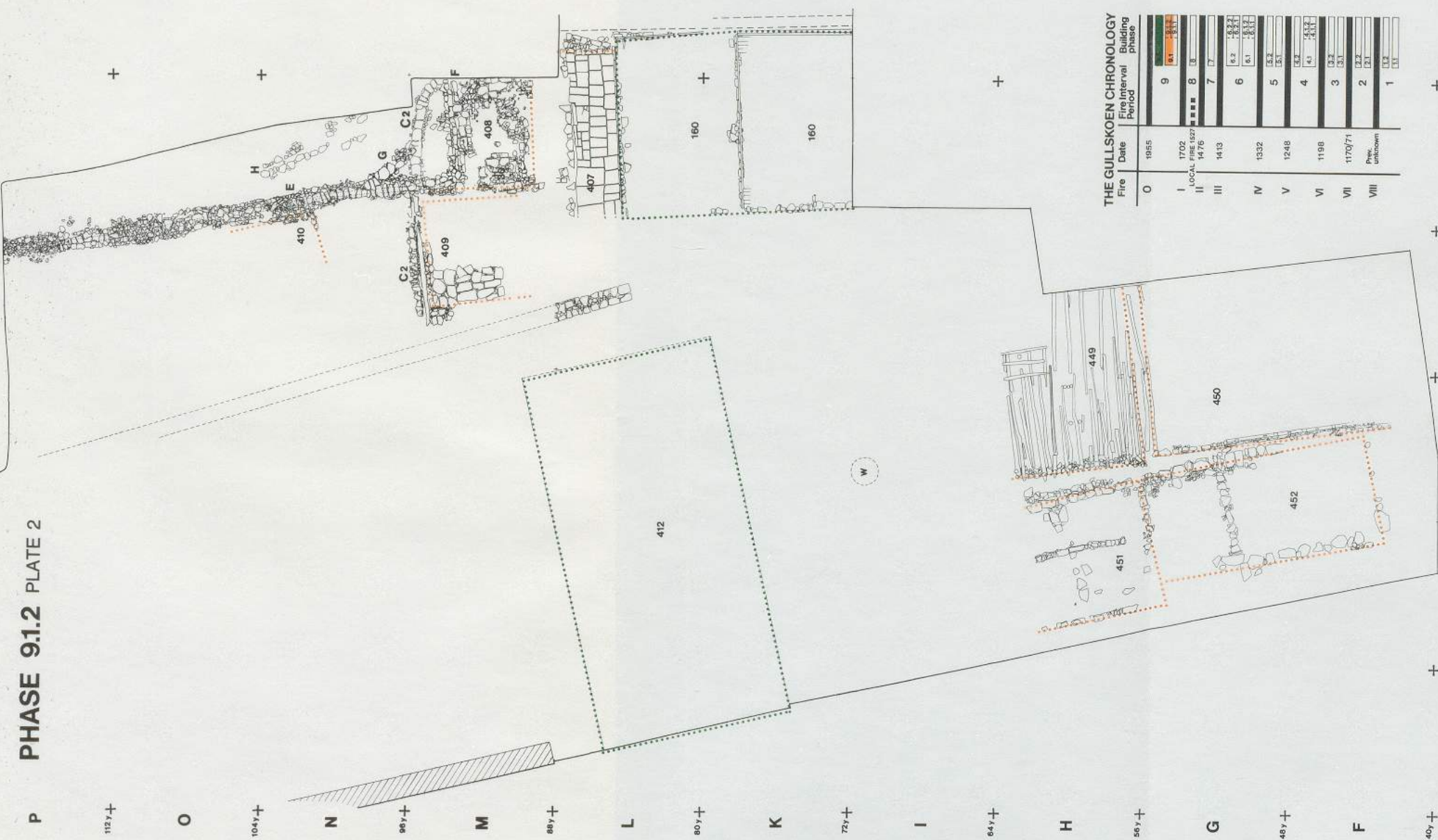


S 144.7 + 138.7 + R 128.7 + Q 120.7 + P 112.7 + O 104.7 + N 96.7 + M 88.7 + L 80.7 + K 72.7 + I 64.7 + H 56.7 + G 48.7 + F 40.7 +

1 2 3 4 5 6 7

120y+ 100y+ 80y+ 64y+ 56y+ 48y+ 40y+
 2 3 4 5 6
 16x 24x 32x 40x 48x

PHASE 91.2 PLATE 2



THE GULLSKOEN CHRONOLOGY

| Fire | Date | Fire Interval | Building Phase |
|------|-----------------|---------------|----------------|
| 0 | 1955 | | |
| I | 1702 | 9 | 9 |
| II | LOCAL FIRE 1527 | 8 | 8 |
| III | 1476 | 7 | 7 |
| IV | 1413 | 6 | 6 |
| V | 1332 | 5 | 5 |
| VI | 1248 | 4 | 4 |
| VII | 1198 | 3 | 3 |
| VIII | 1170/71 | 2 | 2 |
| | Prek. unknown | 1 | 1 |

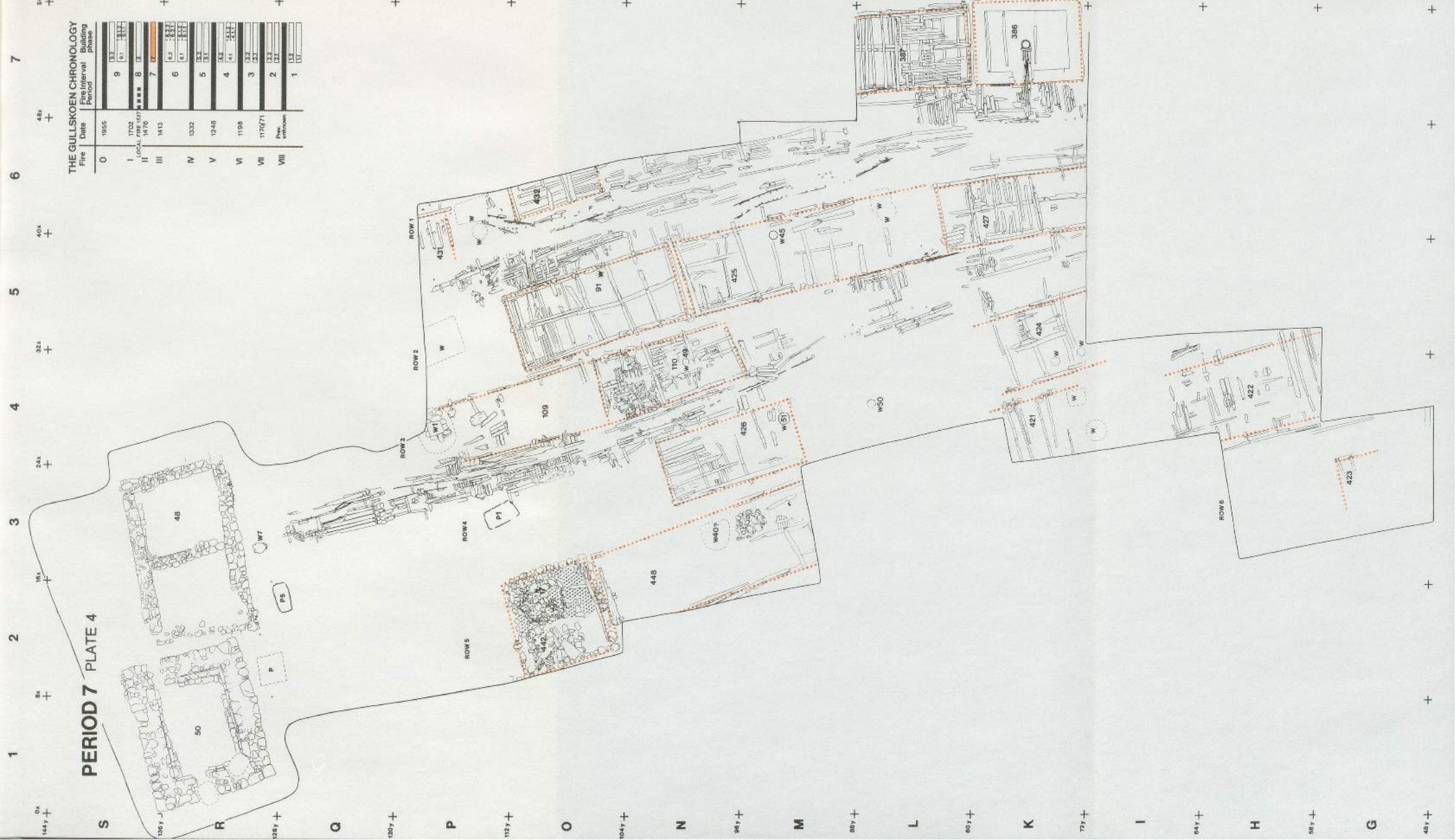
144y + 8x + 24x + 32x + 40x + 48x + 56x +

PERIOD 7 PLATE 4

THE GULLSKOEN CHRONOLOGY

| Fire | Date | Interval Period | Occupying Phase |
|------|-----------------|-----------------|-----------------|
| 0 | 1955 | | |
| I | 1702 | 9 | IX |
| II | LOCAL FIRE 1877 | 8 | IX |
| III | 1476 | 7 | IX |
| IV | 1413 | 6 | IX |
| V | 1332 | 5 | IX |
| VI | 1248 | 4 | IX |
| VII | 1198 | 3 | IX |
| VIII | 1170/71 | 2 | IX |
| | Prev. unknown | 1 | IX |

S 100y + R 328y + Q 120y + P 112y + O 104y + N 88y + M 80y + L 80y + K 77y + I 64y + H 58y + G 48y +



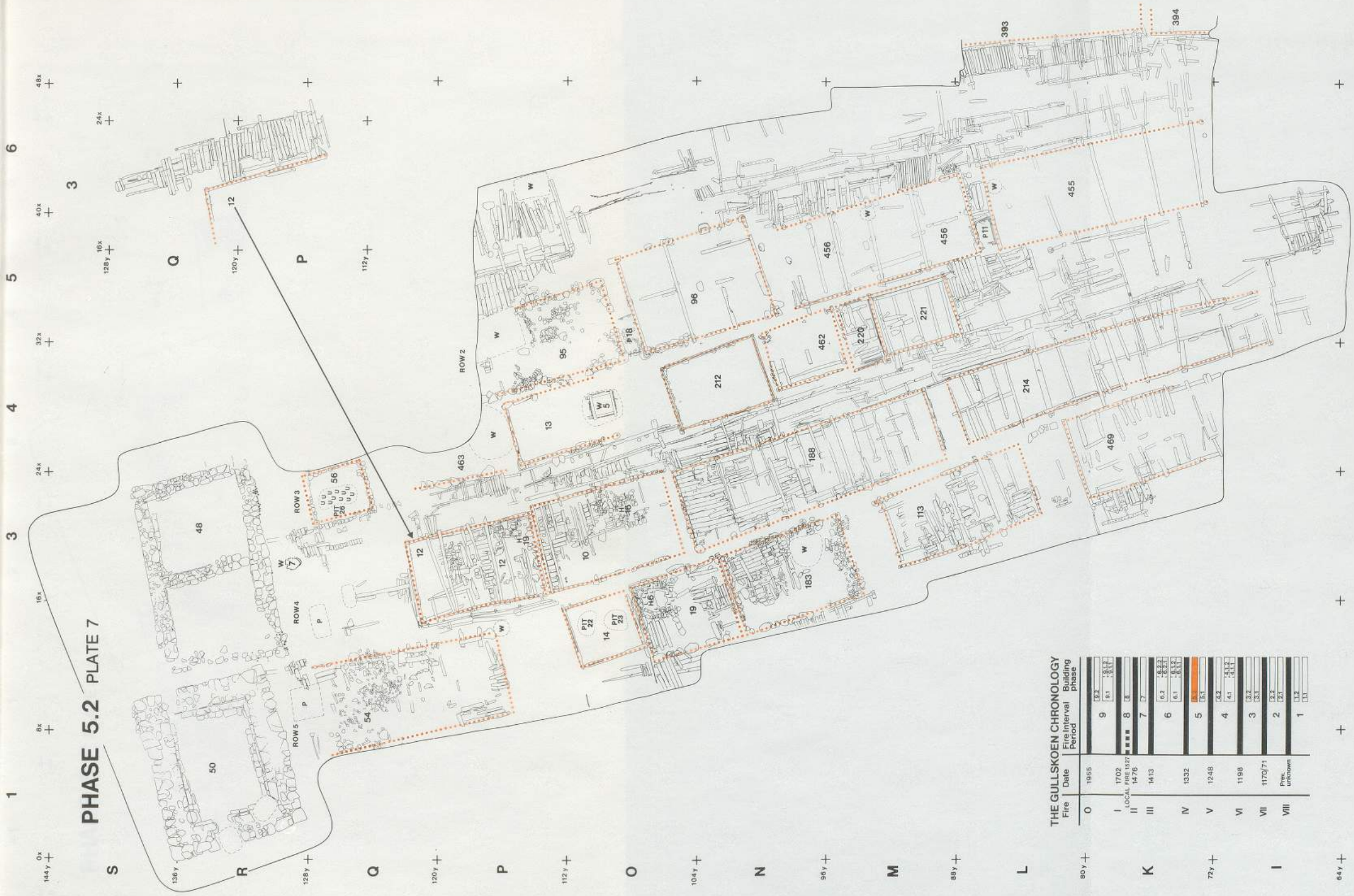
PHASE 6.2 PLATE 5

THE GULLSKOEN CHRONOLOGY

| Fire | Date | Fire Interval Period | Building Phase |
|------|-----------------|----------------------|----------------|
| 0 | 1955 | | |
| I | 1709 | 9 | 9 |
| II | LOCAL FIRE 1807 | 8 | 8 |
| III | 1476 | 7 | 7 |
| IV | 1413 | 6 | 6 |
| V | 1332 | 5 | 5 |
| VI | 1248 | 4 | 4 |
| VII | 1198 | 3 | 3 |
| VIII | 1170/71 | 2 | 2 |
| | Prev. unknown | 1 | 1 |



PHASE 5.2 PLATE 7



THE GULLSKOEN CHRONOLOGY

| Fire Date | Fire Interval Period | Building Phase |
|-----------|-------------------------|----------------|
| 0 | 1955 | |
| I | 1702 | 9 |
| II | LOCAL FIRE 1372 1476 | 8 |
| III | 1413 | 7 |
| IV | 1332 | 6 |
| V | 1248 | 5 |
| VI | 1198 | 4 |
| VII | 1170/71 | 3 |
| VIII | Pre- settlement | 2 |
| | | 1 |

÷1
0x
8x
16x
24x
32x
40x
48x

PHASE 5.1 PLATE 8

S 86y + R 28y + Q 20y + P 112y + O 04y + N 96y + M 88y + L 80y + K 72y + I 64y +



THE GULLSKOEN CHRONOLOGY

| Fire Date | Fire Interval Period | Building phase |
|--------------------|----------------------|----------------|
| 0 1955 | 9 | 3,2 |
| I 1702 | 8 | 9,1 |
| II LOCAL FIRE 1377 | 8 | 3,1 |
| III 1413 | 7 | 3,1 |
| IV 1332 | 6 | 6,2 |
| V 1246 | 5 | 6,1 |
| VI 1198 | 4 | 4,1 |
| VII 1170/71 | 3 | 3,2 |
| VIII | 2 | 3,1 |
| | 1 | 1,1 |



PHASE 4.2 PLATE 9

THE GULLSKÖEN CHRONOLOGY

| Fire | Date | Fire interval Period | Building Phase |
|------|-----------------|-------------------------|-------------------|
| 0 | 1955 | | |
| I | 1702 | 9 | 9.2 |
| II | LOCAL 1476 | 8 | 8.2 |
| III | 1413 | 7 | 7.2 |
| IV | 1332 | 6 | 6.2 |
| V | 1248 | 5 | 5.2 |
| VI | 1198 | 4 | 4.2 |
| VII | 1170/71 | 3 | 3.2 |
| VIII | Fire unknown | 2 | 2.2 |
| | | 1 | 1.2 |



PHASE 4.1 PLATE 10

THE GULLSKOEN CHRONOLOGY

| Fire | Date | Fire Interval Period | Building Phase |
|------|-----------------|----------------------|----------------|
| 0 | 1955 | 9 | 9 |
| I | 1702 | 8 | 8 |
| II | LOCAL FIRE 1527 | 7 | 7 |
| | 1476 | 6 | 6 |
| III | 1413 | 5 | 5 |
| IV | 1332 | 4 | 4 |
| V | 1248 | 3 | 3 |
| VI | 1198 | 2 | 2 |
| VII | 1170/71 | 1 | 1 |
| VIII | Prev. Unknown | | |

SUB-PHASE 4.1.2



144y + 8x + 16x + 24x + 32x + 40x + 48x +

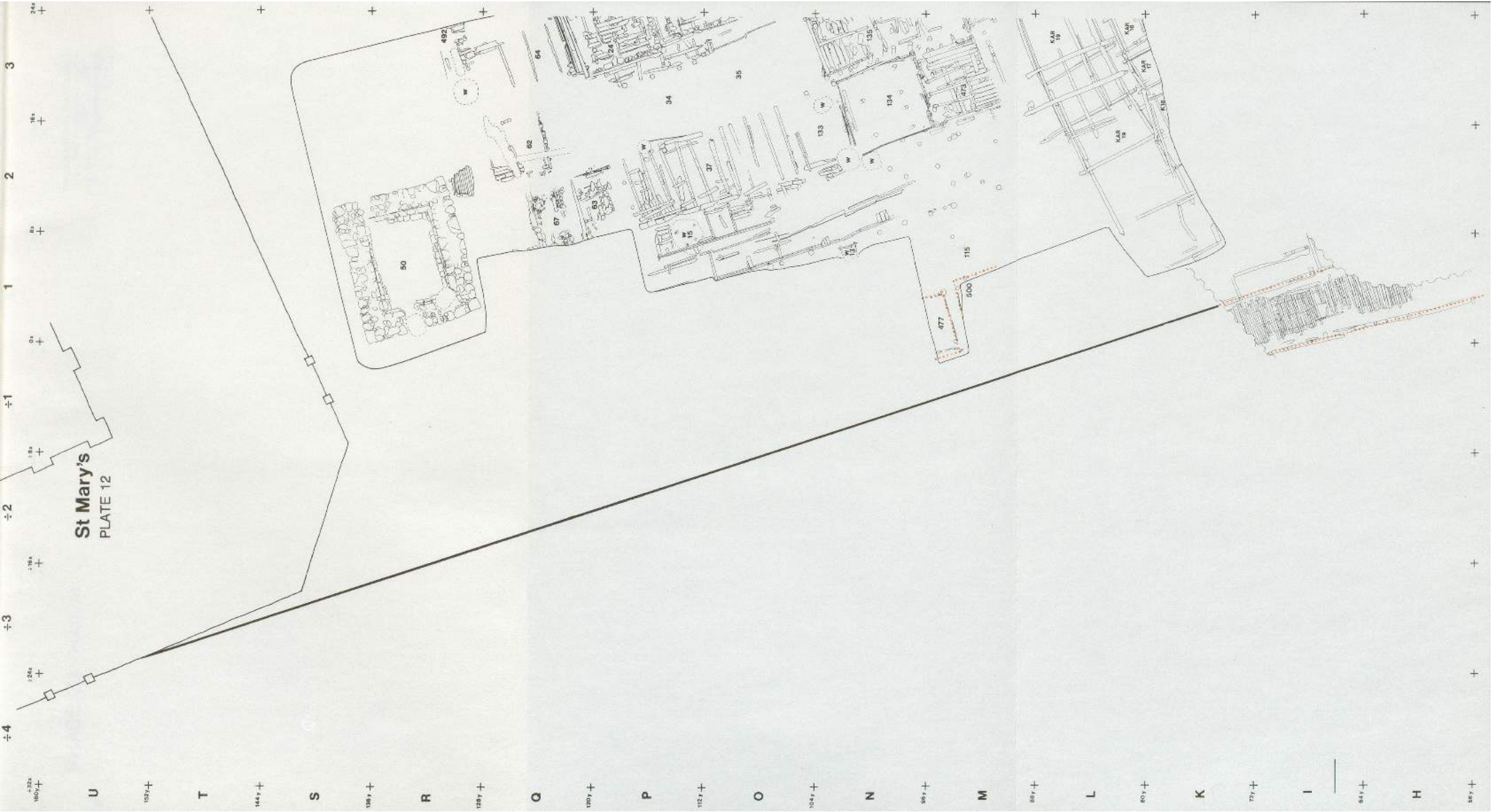
1 2 3 4 5 6

PHASE 3.2 PLATE 11

THE GULLSKOEN CHRONOLOGY

| Fire | Date | Fire Interval Period | Building Phase |
|------|-------------------------|----------------------|-------------------------------|
| 0 | 1955 | | |
| I | 1702 | 9 | 1.2, 3.1, 3.1.7 |
| II | LOCAL FIRE 1927 1476 | 8 | 3 |
| III | 1413 | 7 | 7 |
| IV | 1332 | 6 | 6.2, 6.2.7, 6.1, 6.1.7, 6.3.1 |
| V | 1248 | 5 | 5.2, 5.1 |
| VI | 1198 | 4 | 4.2, 4.1, 4.1.7 |
| VII | 1170/71 | 3 | 3.1 |
| VIII | Pre-unknown | 2 | 2.2, 2.1 |
| | | 1 | 1.2, 1.1 |





St Mary's
PLATE 12

U T S R Q P O N M L K I H

3 2 1

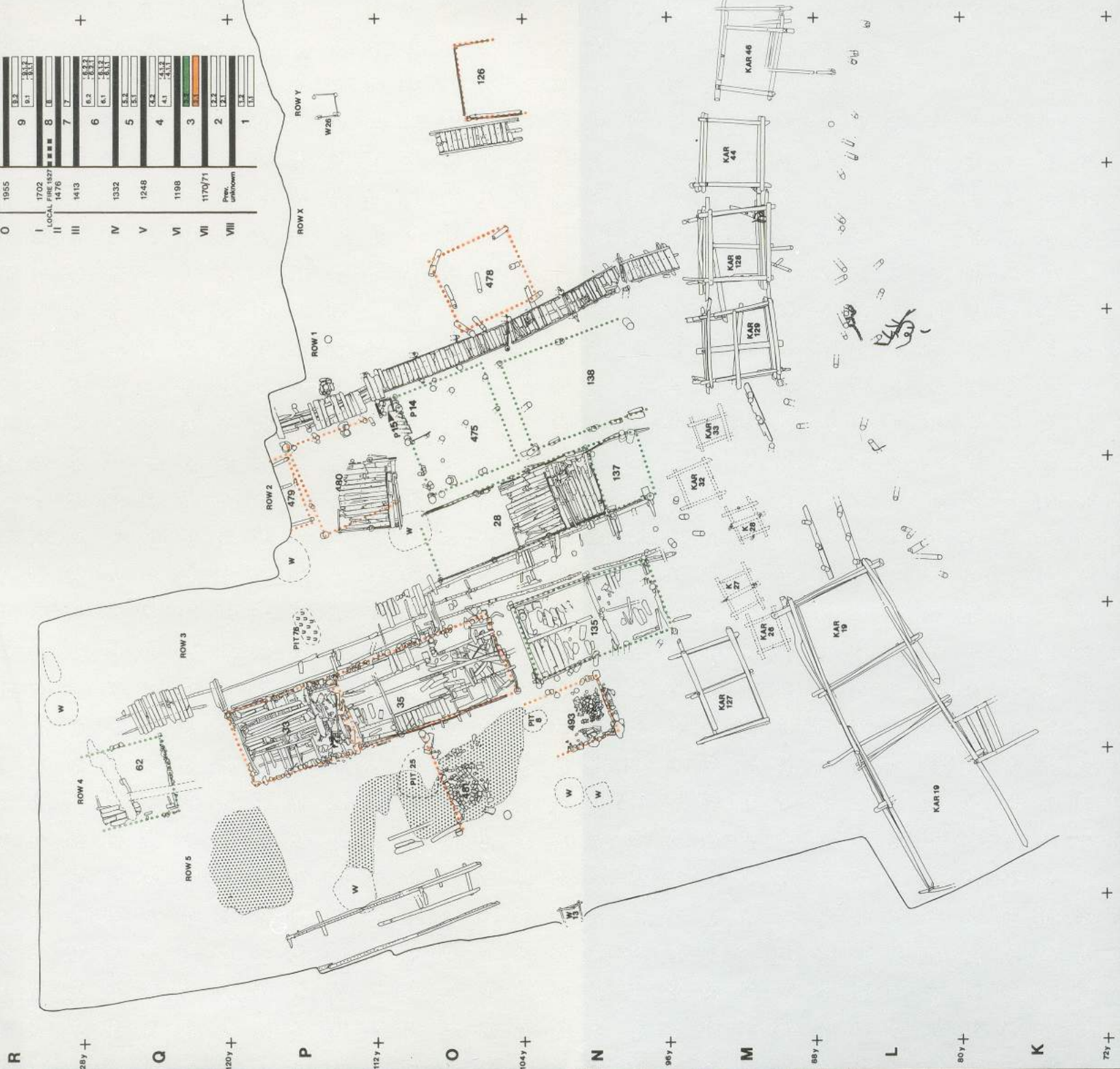
136y + 8x + 16x + 24x + 32x + 40x + 48x + 56x +

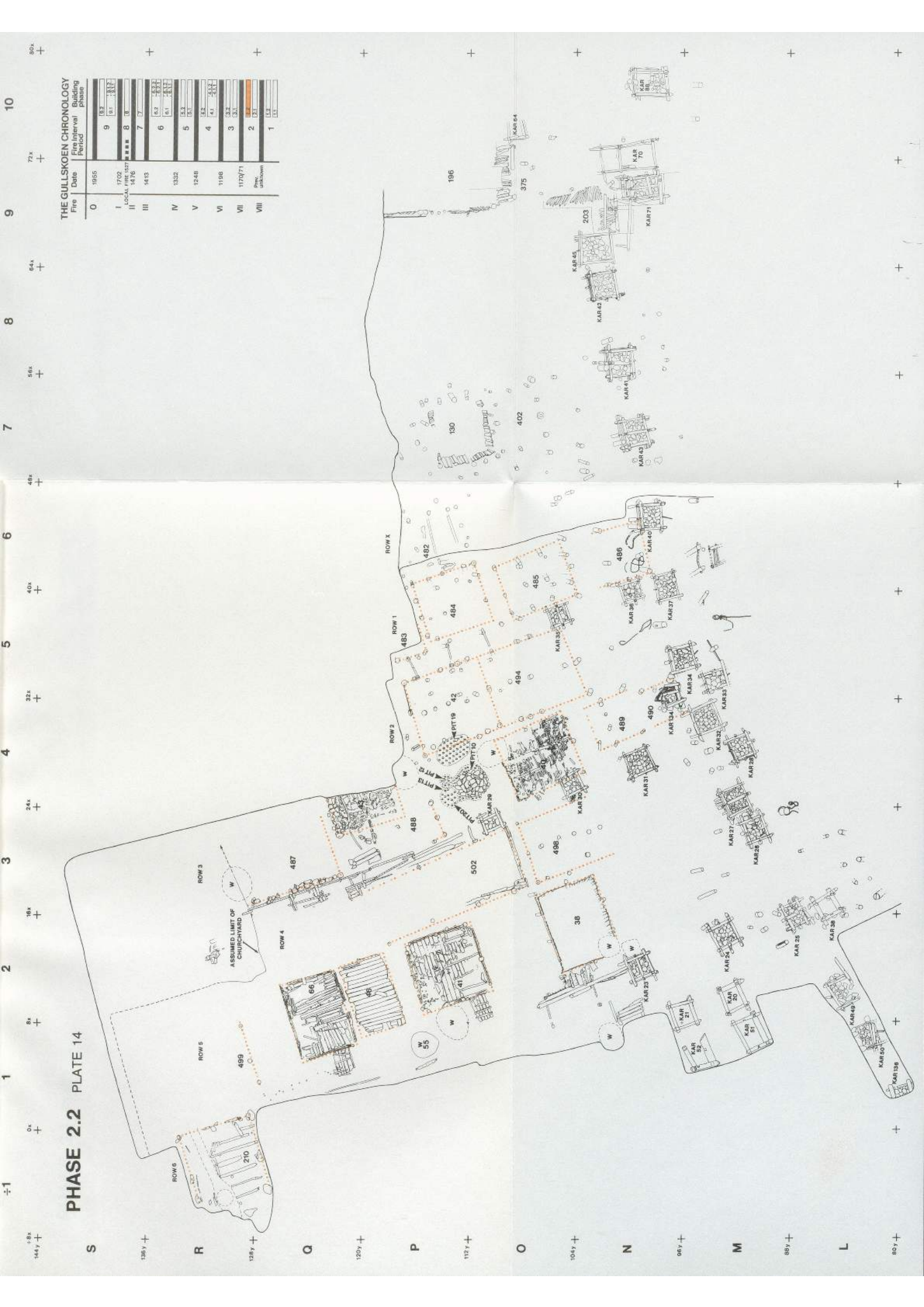
1 2 3 4 5 6 7

PHASE 3.1 PLATE 13

THE GULLSKOEN CHRONOLOGY

| Fire | Date | Fire Interval Period | Building Phase |
|------|-----------------|----------------------|----------------|
| 0 | 1955 | 9 | 3.2 - 3.1 |
| I | 1702 | 8 | 8.1 - 8.1 |
| II | LOCAL FIRE 1527 | 7 | 7.1 - 7.1 |
| III | 1476 | 6 | 6.2 - 6.2 |
| IV | 1413 | 5 | 6.1 - 6.1 |
| V | 1332 | 4 | 5.2 - 5.1 |
| VI | 1248 | 3 | 4.1 - 4.1 |
| VII | 1198 | 2 | 3.1 - 3.1 |
| VIII | 1170/71 | 1 | 2.2 - 2.1 |
| | Prev. unknown | | 1.2 - 1.1 |





PHASE 2.2 PLATE 14

THE GULLSKOEN CHRONOLOGY
Fire Date Interval Ending Phase

| Fire | Date | Interval | Ending Phase |
|--------------------|---------------|-----------|--------------|
| 0 | 1955 | | |
| 9 | 1957 | 1957-1957 | |
| 1 | 1702 | 1947-1952 | |
| II LOCAL FIRE 1927 | | | |
| 1476 | | | |
| 8 | | | |
| III | 1413 | | |
| 7 | | | |
| 6 | 182 | 1817-1817 | |
| 5 | 181 | 1817-1817 | |
| 4 | 183 | | |
| 3 | 1198 | 1179-1179 | |
| 2 | 1179/71 | | |
| VII | | | |
| VIII | Prec. unknown | | |
| 1 | | | |

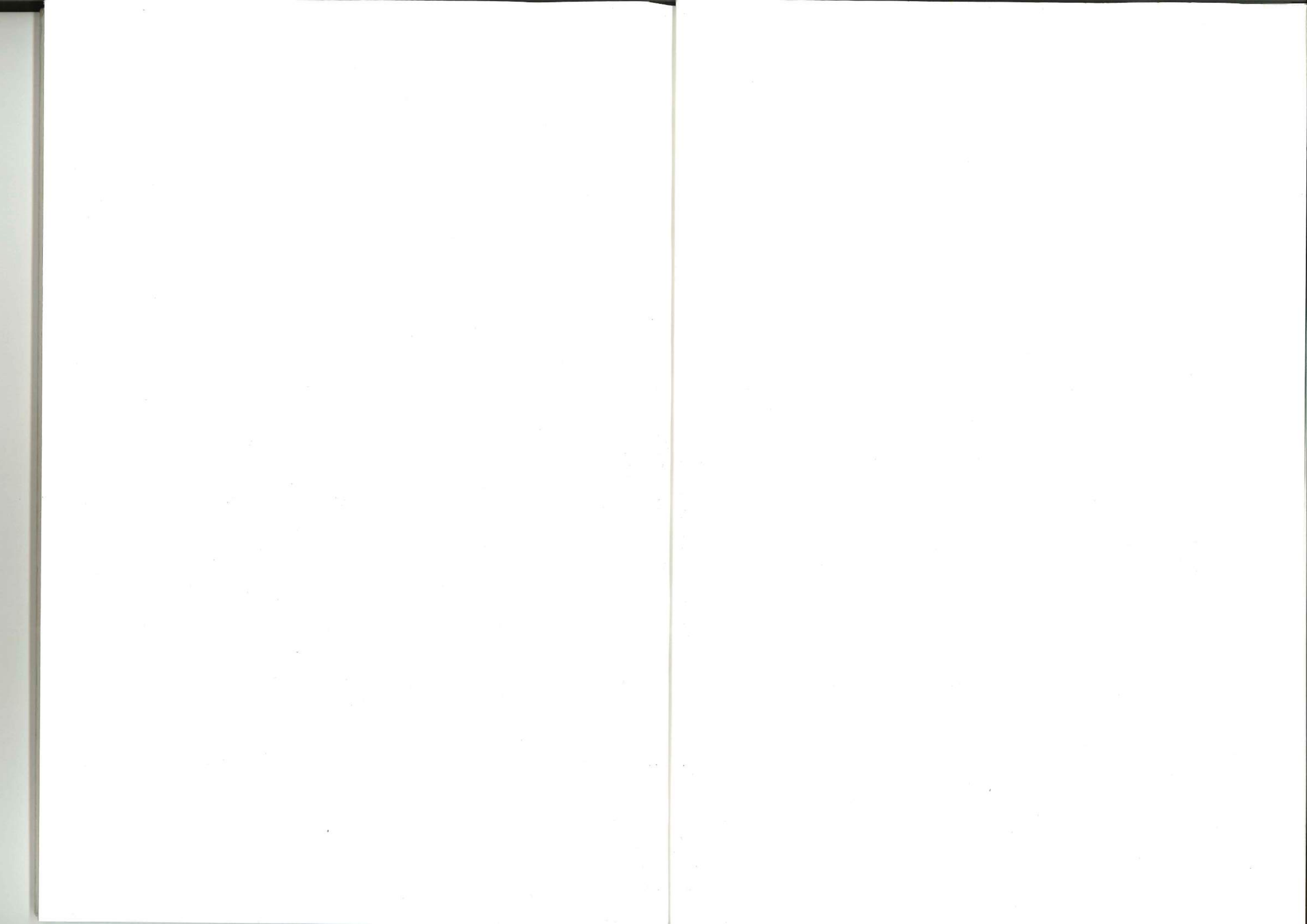
S 144y + 136y + R 128y + Q 120y + P 112y + O 104y + N 96y + M 88y + L 80y +

1 2 3 4 5 6 7 8 9 10



PHASE 2.1 PLATE 15

| THE GULLSKOEN CHRONOLOGY | | |
|--------------------------|-----------------|----------------|
| Fire | Date | Building Phase |
| 0 | 1955 | |
| I | 1702 | 9 |
| II | LOCAL FIRE 1827 | 8 |
| III | 1476 | 7 |
| IV | 1413 | 6 |
| V | 1332 | 5 |
| VI | 1248 | 4 |
| VII | 1196 | 3 |
| VIII | 1170/71 | 2 |
| | Prek. unknown | 1 |



THE BRYGGEN PAPERS gives a scholarly presentation of the archaeological finds from the excavations at Bryggen – The German Wharf – in Bergen.

The papers consist of two series, *the Main Series* and *the Supplementary Series*.

Editorial board appointed by the University of Bergen:

Professor Knut Helle

Senior Curator Asbjørn E. Herteig

Senior Curator, Dr. philos. Svein Indrelid

Asbjørn E. Herteig acts as Chief Editor for both series.

Published in the Main Series

Vol 1 (1984) Asbjørn E. Herteig: 'The Archaeological Excavations at Bryggen, 'The German Wharf', in Bergen, 1955–68'.

Arne Emil Christensen: 'Boat Finds from Bryggen' (ISBN 82-00-02789-4).

Vol 2 (1988) Ingvild Øye: 'Textile Equipment and Its Working Environment, Bryggen in Bergen c 1150–1500' (ISBN 82-00-02537-3).

Vol 3 Part 1 (1990) Asbjørn E. Herteig: 'The Buildings at Bryggen, Their Topographical and Chronological Development' (ISBN 82-00-02944-1).

Published in the Supplementary Series

No 1 Studies on the earliest farm settlement, on the first built-up area along the shore, on animal hair products, coins, and seal jugs (ISBN 82-00-07119-7).

No 2 Presentations of runic inscriptions found at Bryggen (ISBN 82-00-02562-4).

No 3 Brewing, cordage products, sound tools and music (ISBN 82-00-07729-2).

No 4 The Bryggen Pottery I (ISBN 82-00-02796-1).

The author:

Asbjørn E. Herteig, Mag. Art. Hon. FSA, Former Chief Curator,
Dept. of Archaeology, Historical Museum, Medieval Collection,
University of Bergen.

NORWEGIAN
UNIVERSITY PRESS