

## Appendix 1

The Bergen Corpus of  
Medieval Sheaths and Scabbards

# Catalogue

The artefacts are presented by type, each type organised by chronology and museum-number. The museum-number of each artefact refers to excavation. The finds are pictured and supplied with a short description including type, dating, size, a minimum information of context, leather type, seam and stitch-holes.

To find the artefacts by museum-number, use the key on the following two sides.

The following revision has taken place in the collections after the book was written:  
A sheath previously labelled BRM 0/1100 is now labelled BRM 708/1115. Eight sheaths and scabbards without labelling are now given numbers between BRM 0/95317 to 0/95326. These revisions do not affect the book in any manner. All artefacts stem from the Bryggen excavation but lack datings.

A sheath labelled BRM 0/33/1 has now been corrected to BRM 3/33/1. This sheath, assumed to stem from the Bryggen excavation, was actually excavated during the Sandbrugaten 5 excavation. As both of these excavations took place in the northern Bryggen area and the sheath is not dated, this correction does not affect the interpretations presented in the book.

All photographs are by the author.

## Reference key to the catalogue

The Bergen corpus according to museum-number, with reference to cat. no. (the sheaths/scabbards of other materials are not included in the reference key – cat. nos. 333–341).

Museum no.	Cat no.
BRM 0/1019	330
BRM 0/1455	278
BRM 0/1523	177
BRM 0/1537	163
BRM 0/1538	199
BRM 0/1566	279
BRM 0/1568	17
BRM 0/1737	261
BRM 0/1783	291
BRM 0/1804/1	56
BRM 0/1804/2	210
BRM 0/1903	178
BRM 0/2126/1	18
BRM 0/2494	148
BRM 0/2686	160
BRM 0/2696	179
BRM 0/2793/5	245
BRM 0/3196	136
BRM 0/3465	246
BRM 0/3469	247
BRM 0/3517	149
BRM 0/3537	274
BRM 0/3951	248
BRM 0/4093/4	51
BRM 0/4286	84
BRM 0/4648	225
BRM 0/4675	82
BRM 0/4708	232
BRM 0/4738	289
BRM 0/5504	165
BRM 0/6559	19
BRM 0/6720	20
BRM 0/6765	180
BRM 0/6793	280
BRM 0/6915/2	101
BRM 0/7074	262
BRM 0/7175/2	215
BRM 0/7366	21
BRM 0/7386	216
BRM 0/7429	90
BRM 0/7496	137
BRM 0/7696	249
BRM 0/7777	217
BRM 0/7898	181
BRM 0/7981/3	48
BRM 0/7985	128
BRM 0/8091	182
BRM 0/8093	202
BRM 0/8212	263
BRM 0/8218	138
BRM 0/8236/2	22
BRM 0/8296	200
BRM 0/8353	264
BRM 0/8437	171
BRM 0/8642	102
BRM 0/8737	73
BRM 0/9075	203
BRM 0/9178	172

BRM 0/9914	074
BRM 0/10016	233
BRM 0/10048	324
BRM 0/10249	234
BRM 0/10288	1
BRM 0/10395/2	139
BRM 0/11153	161
BRM 0/11154	250
BRM 0/11216	162
BRM 0/11251/1	53
BRM 0/11251/2	127
BRM 0/11324	103
BRM 0/11371	292
BRM 0/11387	91
BRM 0/11427/2	251
BRM 0/11797/1	265
BRM 0/11797/2	266
BRM 0/11990	63
BRM 0/12093	4
BRM 0/12558	252
BRM 0/13496	218
BRM 0/13497	219
BRM 0/13498	166
BRM 0/13499	140
BRM 0/13595	141
BRM 0/13867	310
BRM 0/13868	23
BRM 0/14118	142
BRM 0/14254	193
BRM 0/14304	24
BRM 0/14434	104
BRM 0/14435	281
BRM 0/14436	331
BRM 0/14445	281
BRM 0/14446	282
BRM 0/14531	105
BRM 0/14587	150
BRM 0/14605/2	57
BRM 0/14663	25
BRM 0/14890	281
BRM 0/14925	106
BRM 0/15027	201
BRM 0/15192	26
BRM 0/15233	80
BRM 0/15433	207
BRM 0/15532	194
BRM 0/16102/2	27
BRM 0/16276	253
BRM 0/16327/2	64
BRM 0/16354/2	173
BRM 0/16450/2	60
BRM 0/16929/1	4
BRM 0/16975/2	208
BRM 0/17154/2	45
BRM 0/17291	65
BRM 0/17342	254
BRM 0/18123	226
BRM 0/18314/2	77
BRM 0/18576/2	46

BRM 0/18858/2	238
BRM 0/19561	293
BRM 0/19977	78
BRM 0/20709	239
BRM 0/22095	134
BRM 0/22363/2	255
BRM 0/22365	174
BRM 0/22554	235
BRM 0/23419/2	5
BRM 0/23513/2	92
BRM 0/23811	196
BRM 0/24250	33
BRM 0/24814	93
BRM 0/25622	152
BRM 0/26369/8	107
BRM 0/26475/9	283
BRM 0/26697/2	43
BRM 0/27263/4	143
BRM 0/27583/6	108
BRM 0/27630/11	294
BRM 0/27992/6	109
BRM 0/28047/2	110
BRM 0/28645/9	256
BRM 0/28862/15	6
BRM 0/29168/2	7
BRM 0/29209/14	94
BRM 0/30472	85
BRM 0/30540/8	240
BRM 0/31690/12	236
BRM 0/36115/4	241
BRM 0/36185/4	257
BRM 0/36899	204
BRM 0/37743/3	290
BRM 0/37860/29	49
BRM 0/38228	183
BRM 0/38253/5	67
BRM 0/38253/6	28
BRM 0/38254	267
BRM 0/38339	211
BRM 0/38465	29
BRM 0/38503	268
BRM 0/38841	95
BRM 0/38929	68
BRM 0/39180	61
BRM 0/40197	8
BRM 0/40611/4	54
BRM 0/40612	258
BRM 0/41171	156
BRM 0/41924	86
BRM 0/43124	242
BRM 0/43165	75
BRM 0/44512/3	76
BRM 0/45141/3	326
BRM 0/45983	327
BRM 0/46284	328
BRM 0/46568	83
BRM 0/47734	153
BRM 0/47812/5	186
BRM 0/47812/6	187

BRM 0/47862/22	34
BRM 0/48637	129
BRM 0/48681/6	295
BRM 0/48687	311
BRM 0/48690	269
BRM 0/48692	312
BRM 0/48693	313
BRM 0/48695	296
BRM 0/48696	314
BRM 0/48697	315
BRM 0/48699	316
BRM 0/48700	317
BRM 0/48701	318
BRM 0/48702	319
BRM 0/48704/1	297
BRM 0/48708	298
BRM 0/48710/1	299
BRM 0/48710/2	325
BRM 0/48710/3	320
BRM 0/48710/4	300
BRM 0/48710/5	301
BRM 0/48711	302
BRM 0/48714	303
BRM 0/48715/1	270
BRM 0/48716/1	304
BRM 0/48717	305
BRM 0/48718	321
BRM 0/48721	322
BRM 0/48722	323
BRM 0/49034/1	58
BRM 0/49160	286
BRM 0/49667	220
BRM 0/49784	111
BRM 0/49805/1	30
BRM 0/49919	31
BRM 0/50513/1	32
BRM 0/50547	9
BRM 0/51972/3	10
BRM 0/56137	119
BRM 0/58230	112
BRM 0/59343	55
BRM 0/60855	72
BRM 0/64610/1	113
BRM 0/64684	114
BRM 0/64892	332
BRM 0/73121/2	11
BRM 0/77998	329
BRM 0/78582	147
BRM 0/80103	79
BRM 0/80204	224
BRM 0/80344	47
BRM 0/81399	205
BRM 0/81513	151

BRM 0/82126	228
BRM 0/83593	71
BRM 0/83843	188
BRM 0/85898	288
BRM 0/86545	271
BRM 0/87903	259
BRM 0/88042	70
BRM 0/88695	237
BRM 0/95317	155
BRM 0/95318	223
BRM 0/95319	41
BRM 0/95321	308
BRM 0/95323	273
BRM 0/95324	309
BRM 0/95325	81
BRM 0/95326	189
BRM 3/33/1	38
BRM 3/481/2	39
BRM 3/483/5	40
BRM 3/668/2	272
BRM 4/1174/2	287
BRM 4/1309/2	120
BRM 4/1914	222
BRM 4/2201/3	36
BRM 4/2345/2	121
BRM 4/2516/2	212
BRM 4/3330	144
BRM 4/3499	145
BRM 4/3763	37
BRM 4/4327/2	132
BRM 6/341/1	190
BRM 6/341/2	191
BRM 12/172	122
BRM 20/784	307
BRM 20/982	123
BRM 76/3172	44
BRM 76/3576	184
BRM 76/4179	115
BRM 76/4769	116
BRM 76/5154	185
BRM 76/8433	96
BRM 76/8910	42
BRM 76/10366	157
BRM 76/10426	62
BRM 76/10429	87
BRM 76/10789	158
BRM 76/10916	52
BRM 76/11348	2
BRM 76/11894	50
BRM 76/11944	243
BRM 76/11953	244
BRM 76/12313	133
BRM 76/12803	159

BRM 76/13000	124
BRM 76/19582	164
BRM 76/19583	213
BRM 76/20433	275
BRM 76/21132/2	59
BRM 76/21132/3	206
BRM 76/21205	168
BRM 76/22228	197
BRM 76/22753	118
BRM 83/378	125
BRM 83/1155	221
BRM 83/1254/2	131
BRM 83/1522	175
BRM 83/1536	285
BRM 83/4318	276
BRM 90/554/1	231
BRM 94/1176	97
BRM 104/980	306
BRM 104/1108	154
BRM 110/1120	229
BRM 110/1184	214
BRM 110/1771/2	98
BRM 110/2186	198
BRM 110/2385	277
BRM 110/2415	230
BRM 110/2975	12
BRM 110/3939	69
BRM 110/4735	66
BRM 110/4779	13
BRM 110/4787	260
BRM 110/5133	35
BRM 110/5400	169
BRM 110/6583	209
BRM 237/3509	170
BRM 242/65	88
BRM 245/1728	284
BRM 245/3407	130
BRM 245/3821	14
BRM 346/1753	117
BRM 346/3931	99
BRM 346/4683	227
BRM 346/4788	15
BRM 346/5416	100
BRM 346/5600	16
BRM 346/5818	195
BRM 346/6373	89
BRM 462/466/2	126
BRM 708/1115	146
B 6237	167
B 6385e	192
B 7097z	135
B 7097æ	176



**Cat. no. 1 BRM 0/10288**



**Sheath, small piece of tip missing**

Type A1.1 1170–1198

L 145mm W 23mm T 1mm

Context: Square I11. In layer 236 (Fillmasses).

Bovine leather.

Butted diagonal/side seam with edge-flesh stitch-holes. Flesh-grains stitch-holes on upper part. Curved flaps.

**Cat. no. 2 BRM 76/11348**



**Sheath**

Type A1.1 1198–1248

L 215mm W 29mm T 1mm

Context: Southern part of passage 2.

Bovine leather.

Butted diagonal seam with edge-flesh stitch-holes. Curved flaps (cut) with flesh-grain stitch-holes for suspension (variant 1). Cut-marks inside, cut-through.

**Cat. no. 3 BRM 0/12093**



**Sheath, cut/modified**

Type A1.1 1248–1332

L 205mm W 26mm T 1mm

Context: Square G11. In layer 369.

Ovri-caprine leather (goat).

Butted diagonal seam, flesh-edge stitch-holes (whip-stitching). Flaps are cut/modified.

**Cat. no. 4 BRM 0/16929/1**



**Sheath, small piece of tip missing, torn**

Type A1.1 1248–1332 (below 1332)

L 181mm W 33mm T 1mm

Context: Square L9. East of caisson 108.

Bovine leather.

Butted side-seam with edge-flesh stitch-holes. Unevenly curved flaps with flesh-grain stitch-holes for suspension (variant 1). Cut-marks in side but also imprint after wooden blade protection.

**Cat. no. 5 BRM 0/23419/2**



**Sheath, cut/torn**

Type A1.1 1248–1332 (below 1332)

L 129mm W 20mm T 1mm

Context: Square L8. East of building 89.

Ovri-caprine leather probably (goat probably).

Butted side-seam with edge-flesh stitch-holes. Curved/pointed flaps.

**Cat. no. 6 BRM 0/28862/15**



**Sheath, cut/slashed**

Type A1.1 1248–1332 (about 1332)

L 168mm W 27mm T 1mm

Context: Square L6 (L5). In public square.

Ovri-caprine leather (goat).

Butted diagonal seam with edge-flesh stitch-holes. Pointed flaps with tunnel stitching for suspension (variant1).



**Cat. no. 7 BRM 0/29168/2**



**Sheath, tip missing, cut**

Type A1.1 1248–1332 (over 1248)

L 188mm W 28mm T 1mm

Context: Square L6 (L5). In public square.

Ovri-caprine leather (goat).

Butted diagonal seam with edge-flesh stitch-holes. Modified/unusual flaps (three). Cut-marks inside, cut-through.

**Cat. no. 8 BRM 0/40197**



**Sheath, tip missing**

Type A1.1 1248–1332 (below 1332)

L 135mm W 24mm T 1mm

Context: Square N6. In passageway.

Unidentified leather type (worn).

Butted diagonal seam with edge-flesh stitch-holes. Curved flaps, each with three holes for suspension (variant 2).

**Cat. no. 9 BRM 0/50547/1**



**Sheath, cut/torn**

Type A1.1 1248–1332 (over 1332, 0–5 cm)

L 197mm W 29mm T 1mm

Context: Square L4. In building 185 (*in situ*).

Ovri-caprine leather (goat).

Butted diagonal seam with edge-flesh stitch-holes, flesh-grain on handle-part, probably repair. Pointed flaps, each with a hole for suspension (variant 2). Cut-marks inside, cut-through.

**Cat. no. 10 BRM 0/51972/3**



**Sheath, cut/torn**

Type A1.1 1248–1332 (over 1248)

L 142mm W 18mm T 1mm

Context: Square K4. In passageway.

Ovri-caprine leather (goat).

Butted side-seam with edge-flesh stitch-holes. Pointed flaps with stitch-holes along edges for decoration and tunnel-stitching for suspension (variant 1).

**Cat. no. 11 BRM 0/73121/2**



**Sheath, cut**

Type A1.1 1248–1332 (over 1248)  
L 190mm W 33mm T 1.5mm

Context: Square Q3. Below building 12.

Leather type uncertain.

Butted sideseam with edge-flesh stitch-holes. Curved flaps with stitch-holes for decorative seam along the edge, and tunnel-stitch-holes for suspension (variant 1). Cutmarks inside (through the leather).

**Cat. no. 12 BRM 110/2975**



**Sheath**

Type A1.1 1248–c. 1400  
L 211mm W 29mm T 1mm

Context: in layer 185.

Bovine leather.

Butted side-seam, edge-flesh stitch-holes. Pointed flaps with tunnel-stitch-holes for suspension. Cut-marks inside.



**Cat. no. 13 BRM 110/4779**



**Sheath, cut/torn**

Type A1.1 1248–c. 1400

L 156mm W 22mm T 1mm

Context: in layer 189.

Ovri-caprine leather (goat).

Butted side seam with edge-flesh stitch-holes. Curved flap (one missing) with one hole for suspension (variant 2).

**Cat. no. 14 BRM 245/3821**



**Sheath, cut/torn**

Type A1.1 c. 1280–c. 1350

L 165mm W 28mm T 1mm

Context: in layer 354.

Unidentified leather type (worn).

Butted side-seam with flesh-grain stitch-holes. Flaps probably cut/modified, with flesh-grain stitch-holes, probably for suspension. Cut-marks inside, cut-through.

**Cat. no. 15 BRM 346/4788**



**Sheath, cut/torn**

Type A1.1 c. 1300–c. 1400  
L 155mm W 33mm T 1mm

Context: in layer 160.

Bovine leather.

Butted side-seam with flesh-grain stitch-holes (whip-stitching). Curved/pointed flaps, each with three holes for suspension (variant 2). Cut-marks inside and outside, cut-through.

**Cat. no. 16 BRM 346/5600**



**Sheath**

Type A1.1 c. 1300–c. 1400  
L 200mm W 28mm T 1mm

Context: in layer 179.

Unidentified leather type (worn.)

Butted diagonal seam, edge-flesh stitch-holes (whip-stitches). Pointed flaps, each with two holes for suspension (variant 2). Mineralised fragments inside.



**Cat. no. 17 BRM 0/1568**



**Sheath, small piece of tip missing**

Type A1.1 1332–1413 (1332–1393)

L 186mm W 26mm T 1.5mm

Context: Square G12. In caisson 98 (fillmasses).

Unidentified leather type (due to conservation).

Butted diagonal seam with edge-flesh stitch-holes. Pointed flaps, each with a small hole for suspension (variant 2). Earlier accession number: BR 1018.

**Cat. no. 18 BRM 0/2126/1**



**Sheath, cut along one rim**

Type A1.1 1332–1413 (1332–1393)

L 160mm W 25mm T 1mm

Context: Square H12. In public alley.

Unidentified leather type (conservation).

Butted side seam with edge-flesh stitch-holes. Curved flap (one missing). Earlier accession number: BR 1283.

**Cat. no. 19 BRM 0/6559**



**Sheath**

Type A1.1 1332–1413 (over 1332)  
L 187mm W 37mm T 1mm

Context: Square H11. In passageway.

Bovine leather (probably).

Butted diagonal seam, flesh-edge stitch-holes (whip-stitching). Pointed flaps, each with three small holes for suspension (variant 2). Preserved wooden blade protection.

**Cat. no. 20 BRM 0/6720**



**Sheath, torn**

Type A1.1 1332–1413 (below 1413)  
L 150mm W 30mm T 1mm

Context: Square F11. In bulwark/fundament.

Ovri-caprine leather (goat).

Butted diagonal seam with flesh-grain stitch-holes. Curved flaps, one with flesh-grain stitch-holes for suspension (variant 1), the other with holes for suspension (variant 2) with piece of leather thong preserved.

**Cat. no. 21 BRM 0/7366**



**Sheath, cut/torn**

Type A1.1 1332–1413 (below 1413)

L 186mm W 24mm T 1mm

Context: Square F11. Below building 324.

Ovri-caprine leather (goat).

Butted side-seam with edge-flesh stitch-holes. Curved flaps with stitch-holes for decorative seam along the edge with traces of red thread, and flesh-grain stitch-holes for suspension (variant 1). Cutmarks inside.

**Cat. no. 22 BRM 0/8236/2**



**Sheath, handle part cut along the rim**

Type A1.1 1332–1413 (over 1332)

L 220 mm W 34 mm T 1 mm

Context: Square F11. In layer 114.

Ovri-caprine leather (goat).

Butted side-seam with edge-flesh stitch-holes. Pointed laps with stitch-holes for decorative seam along edges.



**Cat. no. 23 BRM 0/13868**



**Sheath, flaps and blade-part cut/slashed**

Type A1.1 1332–1413 (below 1393)

L 170mm W 25mm T 1mm

Context: Square L10. Below building 343.

Ovri-caprine leather (goat).

Butted side-seam with edge-flesh stitch-holes, repaired with flesh-grain stitch-holes.

**Cat. no. 24 BRM 0/14304**



**Sheath**

Type A1.1 1332–1413 (below 1413)

L 161mm W 27mm T 1mm

Context: Square K9.

Ovri-caprine leather (goat).

Butted side-seam with flesh-grain stitch-holes (whip-stitching). Rectangular flaps with stitch-holes for decorative seam along the edge, and flesh-grain stitch-holes for suspension (variant 1).

**Cat. no. 25 BRM 0/14663**



**Sheath**

Type A1.1 1332–1413 (below 1413)  
L 194mm W 33mm T 1mm

Context: Square K9. In evesdrop.

Ovri-caprine leather (goat).

Butted diagonal seam with edge-flesh stitch-holes, continuing into one of the curved flaps. Cutmarks inside.

**Cat. no. 26 BRM 0/15192**



**Sheath, cut**

Type A1.1 1332–1413 (below 1413)  
L 177mm W 29mm T 1mm

Context: Square I9. In bulwark/fundament.

Ovri-caprine leather (goat).

Butted diagonal seam with edge-flesh stitch-holes. Partly cut flaps with holes for suspension (variant 2).

Cutmarks inside, cut-through.

**Cat. no. 27 BRM 0/16102/2**



**Sheath**

Type A1.1 1332–1413 (over 1332)  
L 242mm W 28mm T 1.5mm

Context: Square L9. In evesdrop.

Ovri-caprine probably (goat probably).

Butted diagonal/side seam, edge-flesh stitch-holes. Curved flaps with stitch-holes for decoration at edges, one flap with a suspension hole (variant 2). Cut-marks inside.

**Cat. no. 28 BRM 0/38253/6**



**Sheath, blade-part missing, several slashes**

Type A1.1 1332–1413 (over 1332)  
L 120mm W 31mm T 1mm

Context: Square N6. In passageway.

Ovri-caprine leather (goat).

Butted diagonal seam with edge-flesh stitch-holes. One preserved pointed flap with tunnel stitch-holes for suspension (variant 1).



**Cat. no. 29 BRM 0/38465**



**Sheath**

Type A1.1 1332–1413 (over 1332)

L 162mm W 26mm T 1.5mm

Context: Square M5. In bulwark/fundament.

Ovri-caprine leather (goat).

Butted sideseam with edge-flesh stitch-holes. Cutmarks inside.

**Cat. no. 30 BRM 0/49805**



**Sheath, flaps partly cut**

Type A1.1 1332–1413 (over 1332)

L 142mm W 26mm T 1mm

Context: Square M3. In building 182.

Ovri-caprine leather (goat).

Butted side-seam with edge-flesh stitch-holes, continuing into one of the flaps, partly missing. Rectangular flap.

**Cat. no. 31 BRM 0/49919**



**Sheath**

Type A1.1 1332–1413 (over 1332)  
L 142mm W 14mm T 1mm

Context: Square M3. In building 182.

Ovri-caprine leather (goat).

Butted side-seam with edge-flesh stitch-holes. Pointed/curved flaps with stitch-holes along edges for decoration. Tunnel-stitching for suspension (variant 1). Remains of wooden blade-protection preserved.

**Cat. no. 32 BRM 0/50513/1**



**Sheath, cut/torn**

Type A1.1 1332–1413 (over 1332)  
L 200mm W 29mm T 1mm

Context: Square L4, in building 185.

Ovri-caprine leather (goat).

Butted side-seam, edge-flesh stitch-holes. One curved flap preserved, with stitch-holes for decorative seam along the edge, and tunnel-stitch-holes for suspension (variant 1). Cutmarks inside.



**Cat. no. 33 BRM 0/24250**



**Sheath**

Type A1.1 1413–1476 (below 1476)

L 192mm W 37mm T 1.5mm

Context: Square L5. East of building 427.

Unidentified leather type (worn).

Butted sideseam with edge-flesh stitch-holes. Flaps (unusual) with holes for suspension. Cut-marks inside.

**Cat. no. 34 BRM 0/47862/22**



**Sheath, cut/torn**

Type A1.1 1413–1476 (below 1476)

L 180mm W 24mm T 1mm

Context: Square N3. In building 426.

Ovri-caprine leather (goat).

Butted diagonal seam with edge-flesh stitch-holes, continuing into one of the flaps. Pointed/curved flaps, one partly cut, one with hole for suspension (variant 2). Cut-marks inside, cut through continuing into curve.

**Cat. no. 35 BRM 110/5133**



**Sheath, cut/torn**

Type A1.1 c. 1400–1476

L 180mm W 24mm T 1mm

Context: in layer 270.

Leather type unknown (worn).

Butted side-seam with edge-flesh stitch-holes.

Pointed flaps with stitch-holes along edges for decoration (traces of preserved thread) and tunnel stitch-holes for suspension (variant 1). Cut-marks inside (cut through).

**Cat. no. 36 BRM 4/2201/3**



**Sheath, cut**

Type A1.1 after 1215/25

L 208mm W 29mm T 1.5mm

Context: in fillmasses.

Unidentified leather type (worn).

Butted side-seam with flesh-grain stitch-holes (whip-stitching) continues into one of the flaps. Curved flaps with flesh-grain stitch-holes for suspension.

**Cat. no. 37 BRM 4/3763**



**Sheath, cut/torn**

Type A1.1 after 1215/25  
L 142mm W 25mm T 1.5mm

Context: in fillmasses.

Bovine leather.

Butted diagonal seam with flesh-grain stitch-holes (whip-stitching). Pointed/curved flaps with stitch-holes along edges for decoration.

**Cat. no. 38 BRM 3/33/1**



**Sheath, cut**

Type A1.1 Dating unknown  
L 220mm W 32mm T 1mm

Context: se Catalogue p. 2

Ovri-caprine leather (goat).

Butted diagonal/side seam, edge-flesh stitch-holes. Pointed curves with stitch-holes along edges for decoration. Cut-marks inside, cut-through.



**Cat. no. 39 BRM 3/481/2**



**Sheath, flaps torn**

Type A1.1      Dating: unknown  
L 157mm      W 28mm      T 1.5mm

Context: in fillmasses.

Bovine leather.

Butted diagonal seam with edge-flesh stitch-holes. Flaps are torn, cut-marks inside.

**Cat. no. 40 BRM 3/483/5**



**Sheath, cut/torn**

Type A1.1      Dating unknown  
L 230mm      W 31mm      T 1mm

Context: in fillmasses.

Ovri-caprine leather (goat).

Butted diagonal/sideseam with edge-flesh stitch-holes. Pointed flaps with tunnel stitch-holes for suspension (variant 1). Cutmarks inside, cut-through and torn.

**Cat. no. 41 BRM 0/95319**



**Sheath, tip torn**

Type A1.1      Dating unknown  
L 230mm      W 34mm      T 1mm

Context: (Bryggen site).

Bovine leather.

Butted diagonal seam with edge-flesh stitch-holes. Curved flaps, one with notch, and each with several holes for suspension (variant 2). Cut-marks inside.

**Cat. no. 42 BRM 76/8910**



**Sheath, cut**

Type A1.1      Dating unknown  
L 195mm      W 36mm      T 1.5mm

Context: (Rosenkrantzgate 4 site).

Ovri-caprine probably (goat probably).

Butted diagonal seam with edge-flesh stitch-holes. Flesh-grain whip-stitching on upper part – repair.

Curved flaps, cut. Cut-marks inside, cut-through.

**Cat. no. 43 BRM 0/26697/2**



**Sheath**

Type A1.2 1248–1332

L 145 mm W 25 mm T 1.5 mm

Context: Square K4.

Bovine leather.

Butted side-seam with flesh-grain stitch-holes. Rectangular flaps with stitch-holes along edges for decoration, flesh-grain stitch-holes for suspension (variant 1).

**Cat. no. 44 BRM 76/3172**



**Sheath**

Type A1.2 1332–1413

L 151mm W 30mm T 1mm

Context: in building 6.

Ovri-caprine leather (goat).

Butted sideseam with flesh-grain stitch-holes (whip-stitching). Curved flaps with stitch-holes for decorative seam along the edge, tunnel-stitch-holes for suspension (variant 1).



**Cat. no. 45 BRM 0/17154/2**



**Sheath, torn**

Type A1.3 1248–1332 (below 1332)

L 172mm W 23mm T 1mm

Context: Square I9. In caisson 108.

Ovri-caprine probably (goat probably).

Butted diagonal seam with edge-flesh stitch-holes. Pointed flaps (one cut) with flesh-grain stitch-holes for suspension (variant 1).

**Cat. no. 46 BRM 0/18576/2**



**Sheath, one flap missing**

Type A1.3 1248–1332

L 136mm W 17mm T 1mm

Context: Square I9. In caisson 108.

Ovri-caprine leather (goat).

Butted diagonal seam with flesh-grain stitch-holes. Pointed flaps (one cut) with stitch-holes for decoration along edge, tunnel-stitching for suspension (variant 1).

**Cat. no. 47 BRM 0/80344**



**Sheath, torn**

Type A1.3 1248–1332

L (162)mm W 27mm T 1mm

Context: Square P8. South of building 123.

Bovine leather probably.

Butted side-seam with edge-flesh stitch-holes. Flaps missing.

**Cat. no. 48 BRM 0/7981/3**



**Sheath, cut/torn**

Type A1.3 1332–1413 (over 1332)

L 227mm W 34mm T 1mm

Context: Square F11. West of caisson 106.

Ovri-caprine leather probably (goat probably).

Butted diagonal seam with edge-flesh stitch-holes, partly cut away, continuing into one flap. Curved flaps, sliced, with tunnel-stitching for suspension (variant 1). Cut-marks inside, cut-through.



**Cat. no. 49 BRM 0/37860/29**



**Sheath**

Type A1.3 1332–1413 (below 1413)

L 204mm W 24mm T 1mm

Context: Square M4. In passageway.

Bovine leather.

Butted diagonal seam with edge-flesh stitch-holes. Curved/rectangular flaps with stitch-holes along edges for decoration, tunnel-stitching for suspension (variant 1).

**Cat. no. 50 BRM 76/11894**



**Sheath, cut**

Type A1.3 Dating uncertain

L 280mm W 34mm T 1mm

Context: east of building 23.

Bovine leather.

Butted diagonal seam with edge-flesh stitch-holes. Pointed flaps (one cut) with tunnel-stitching for suspension (variant 1). Cut-marks inside, cut-through along rim.

**Cat. no. 51 BRM 0/4093/4**



**Sheath, cut/slashed**

Type A1.4 1198–1248

L 238mm W 24mm T 1mm

Context: Square I12. Fillmasses.

Ovri-caprine leather probably (goat probably).

Butted diagonal seam with edge-flesh stitch-holes. Pointed flaps, one missing. Has been cut along seams and through leather surface.

**Cat. no. 52 BRM 76/10916**



**Sheath**

Type A1.4 1198–1248

L 237mm W 28mm T 1mm

Context: west of building 21.

Ovri-caprine leather (goat).

Butted diagonal seam with edge-flesh stitch-holes. Pointed/curved flaps, each with three small holes for suspension (variant 2). Stitch-holes along edges of tail with remains of decorative thread (red).

**Cat. no. 53 BRM 0/11251/1**



**Sheath**

Type A1.4 1248–1332 (below 1332)

L c225mm W 24mm T 1mm

Context: Square G11. North of caisson 102

Ovri-caprine leather (goat).

Butted diagonal seam with edge-flesh stitch-holes. Stitch-holes for fastening suspension at curves. Pointed flaps with tunnel-stitching for suspension (variant 1). Fragmented with corroded remains, probably deposited with knife inside.

**Cat. no. 54 BRM 0/40611/4**



**Sheath, worn**

Type A1.4 1248–1332 (over 1248)

L 200mm W 22mm T 1mm

Context: Square N5. Fillmasses.

Ovri-caprine leather (goat).

Butted diagonal seam with edge-flesh stitch-holes. Pointed flaps with preserved remains of decorative sewing along edges, and preserved threads for suspension, fixed with tunnel-stitching (variant 1). Preserved decoration also along tail/curves (silk). Previously published: Bolstad 1991:138–139, fig. 5.

**Cat. no. 55 BRM 0/59343**



**Sheath**

Type A1.4 1248–1332 (over 1332, 0–5 cm)

L 200mm W 23mm T 1.5mm

Context: Square P2. North of building 3.

Bovine leather.

Butted diagonal seam with edge-flesh stitch-holes. Pointed flaps with stitch-holes along edges for decoration, tunnel-stitching for suspension (variant 1).

**Cat. no. 56 BRM 0/1804/1**



**Sheath, mouth missing**

Type A1.4 1332–1413 (1332–1393)

L 168mm W 23mm T 1mm

Context: Square G12. In caisson 98 (fillmasses).

Ovri-caprine leather (goat).

Butted diagonal seam with edge-flesh stitch-holes. Stitch-holes for decoration along tail. Earlier accession number: BR 1083.



**Cat. no. 57 BRM 0/14605/2**



**Sheath**

Type A1.4 1332–1413 (below 1413)  
L 145mm W 20mm T 1.5mm

Context: Square L9.

Bovine leather.

Butted diagonal seam with edge-flesh stitch-holes. Curved/angular flaps.

**Cat. no. 58 BRM 0/49034**



**Sheath**

Type A1.4 1332–1413 (below 1413)  
L 162mm W 16mm T 1mm

Context: Square M4. East of building 132.

Unidentified leather type (conservation).

Butted diagonal seam with edge-flesh stitch-holes. Pointed/curved flaps (one cut).

**Cat. no. 59 BRM 76/21132/2**



**Sheath**

Type A1.5 1198–1248

L 172mm W 18mm T 1mm

Context: in bulwark/fundament (layer 51).

Ovri-caprine leather (goat).

Butted diagonal seam with edge-flesh stitch-holes. Curved flaps with tunnel-stitching for suspension (variant 1).  
Cut-marks inside.

**Cat. no. 60 BRM 0/16450/2**



**Sheath, cut/worn**

Type A1.5 1248–1332 (“just below” 1332)

L 270mm W 30mm T 1mm

Context: Square I9. In passageway (in situ).

Bovine leather probably.

Butted diagonal seam with edge-flesh stitch-holes. Pointed flaps (one cut) with tunnel-stitching for suspension (variant 1). Cut through along rim.

**Cat. no. 61 BRM 0/39180**



**Sheath**

Type A1.5 1248–1332 (below 1332, alternative dating: 1332–1413)

L 155mm W 17mm T 1mm

Context: Square O4. In passageway.

Ovri-caprine leather (goat).

Butted diagonal seam with edge-flesh stitch-holes. Curved flaps with stitch-holes for decoration along edges.

**Cat. no. 62 BRM 76/10426**



**Sheath, cut/worn**

Type A1.6 1198–1248

L (225)mm W 30mm T 1mm

Context: below building 25.

Unidentified leather type (worn).

Butted diagonal seam with edge-flesh stitch-holes. Flaps torn, one is missing.

**Cat. no. 63 BRM 0/11990**



**Sheath, cut/worn**

Type A1.6 1248–1332 (below 1332)

L 235mm W 23mm T 1mm

Context: Square H11. Fillmasses.

Ovri-caprine leather probably (goat probably).

Butted diagonal seam with edge-flesh stitch-holes. Pointed flaps with stitch-holes for decorative sewing along edges and preserved threads in tunnel-stitch-holes for suspension (variant 1). Cut-through.

**Cat. no. 64 BRM 0/16327/2**



**Sheath**

Type A1.6 1248–1332 (below 1332)

L 232mm W 27mm T 1mm

Context: Square K9. Below building 368.

Ovri-caprine leather (goat).

Butted diagonal seam with edge-flesh stitch-holes. Pointed/curved flaps with tunnel-stitching for suspension (variant 1). Stitch-holes for decoration also along tail. Cut-marks inside.



**Cat. no. 65 BRM 0/17291**



**Sheath, cut/worn**

Type A1.6 1248–1332 (below 1332)

L 185mm W 26mm T 1mm

Context: Square I9. North of caisson 108.

Ovri-caprine leather (goat).

Butted side-seam with edge-flesh stitch-holes. Parts of wooden blade protection preserved. Upper part lost.

**Cat. no. 66 BRM 110/4735**



**Sheath, cut/worn**

Type A1.6 1248–c. 1400

L 163mm W 260mm T 1mm

Context: in layer 135.

Ovri-caprine leather (goat).

Butted side-seam with edge-flesh stitch-holes. Flaps and tail are cut. Cut-marks inside, cut-through.

**Cat. no. 67 BRM 0/38253/5**



**Sheath**

Type A1.6 1332–1413 (over 1332)  
L 160mm W 15mm T 1mm

Context: Square N6. In passageway.

Ovri-caprine leather (goat).

Butted diagonal seam with edge-flesh stitch-holes. Curved flaps. Cutmarks inside.

**Cat. no. 68 BRM 0/38929**



**Sheath**

Type A1.6 1332–1413  
L 220mm W 26mm T 1mm

Context: Square N4. In building.

Unidentified leather type (worn).

Butted side seam with edge-flesh/ flesh-grain stitch-holes (whip-stitching). Pointed flaps.

**Cat. no. 69 BRM 110/3939**



**Sheath, cut/worn**

Type A1.7 1<sup>st</sup> Q1200–1248

L 220mm W 26mm T 1.5mm

Context: in layer 239 in fundament 38.

Ovri-caprine leather (goat).

Butted diagonal seam with edge-flesh stitch-holes. Curved flaps. Cutmarks inside, cut-through.

**Cat. no. 70 BRM 0/88042**



**Sheath, cut/worn**

Type A1.7 1248–1332 (over 1248)

L 285mm W 33mm T 1mm

Context: Square M10. In building 199.

Bovine leather.

Butted diagonal seam with edge-flesh stitch-holes (partly removed). Pointed flaps (one cut) with tunnel-stitching for suspension (variant 1). Cut-marks inside.



**Cat. no. 71 BRM 0/83593**



**Sheath, cut/worn**

Type A1.8 1248–1332

L 193mm W 19mm T 1mm

Context: Square M10. In fundament/bulwark.

Ovri-caprine leather (goat).

Butted diagonal seam with edge-flesh stitch-holes. Rectangular/cut flaps.

**Cat. no. 72 BRM 0/60855**



**Sheath, cut/worn**

Type A1.9 1248–1332 (below 1332, 0–5 cm)

L 158mm W 26mm T 1.5mm

Context: Square O3, South of building 14.

Unidentified leather type (worn).

Butted diagonal seam with edge-flesh stitch-holes. Curved flaps with tunnel-stitching for suspension (variant 1).

**Cat. no. 73 BRM 0/8737**



**Sheath**

Type A1.9 1332–1413 (over 1332)  
L 148mm W 27mm T 1mm

Context: Square F11. In layer 132.

Ovri-caprine leather probably (goat probably).

Butted side seam with flesh-grain stitch-holes.

Rectangular/cut flaps, each with one hole for suspension (variant 2).

**Cat. no. 74 BRM 0/9914**



**Sheath**

Type A2 1170/71–1198 (alternative dating: 1198–1248)  
L 180mm W 26mm T 1mm

Context: Square I11. In layer 197 (Fillmasses).

Ovri-caprine leather (goat).

Butted side seam with flesh-grain stitch-holes.

Two thongs for suspension, the longest 185 mm with three slots at the end.

**Cat. no. 75 BRM 0/43165**



**Sheath, worn**

Type A2 1170/71-1198 (over 1170/71)

L 170mm W 26mm T 1mm

Context: Square O5. South of passageway.

Ovri-caprine leather (goat).

Butted side seam with flesh-grain stitch-holes. The mouth prolonged in four thongs that meets in a plaited knot. Several holes in the leather, the upper ones may have served as suspension slots.

**Cat. no. 76 BRM 0/44512/3**



**Sheath, cut/worn**

Type A2 1170/71-1198 (below 1198)

L 170mm W 20mm T 1mm

Context: Square N5. North of passageway.

Ovri-caprine leather probably (goat probably).

Butted side seam, flesh-grain stitches. The mouth is partly cut, but seems to have ended in at least one longer strap.



**Cat. no. 77 BRM 0/18314/2**



**Sheath**

Type A2 1198–1248 (below 1248)

L 145mm W 29mm T 1 mm

Context: Square K9. In bulwark/fundament.

Bovine probably.

Butted (prob.) side seam, flesh-grain stitch-holes. 65mm long strap ends in loop for attachment to belt.

**Cat. no. 78 BRM 0/19977**



**Sheath**

Type A2 1198–1248

L 140mm W 27mm T 1mm

Context: Square K9. In caisson 61.

Butted (prob.) side seam, flesh-grain stitch-holes. Two thongs (c. 160mm) for suspension, ending in knot.

Wooden blade-protection preserved.

**Cat. no. 79 BRM 0/80103**



**Sheath**

Type A2 1198–1248

L 190mm W 49mm T 2mm

Context: Square N7. East of caisson 43.

Bovine leather.

Closed side seam, flesh-grain stitches. Prolonging (22mm) with slot for suspension.

**Cat. no. 80 BRM 0/15233**



**Sheath**

Type A2 1332–1413 (below 1413)

L 165mm W 34mm T 2mm

Context: Square L8. In passageway.

Ovri-caprine leather probably (goat probably).

Closed side seam, flesh-grain stitches. The mouth ends in a square with stitch-holes at one side, and at the other side, in two slots.

**Cat. no. 81 BRM 0/95325**



**Sheath, cut**

Type A2      Dating: unknown  
L 140mm      W 29mm      T 1mm

Context: (Bryggen site).

Ovri-caprine leather (goat).

Butted side seam, flesh-grain stitches. An additional diagonal seam is probably secondary repair. Mouth is slit and has four slots.

**Cat. no. 82 BRM 0/4675**



**Sheath, worn**

Type A3      1170/71–1198  
L 314mm      W 60mm      T 1-2mm

Context: Square I12. Fillmasses/dumped.

Ovri-caprine leather probably (goat probably).

Closed side-seam with flesh-grain stitches. 2 slots for suspension (ruined).



**Cat. no. 83 BRM 0/46568**



**Sheath, worn**

Type A3 1170/71–1198 (below 1198)

L 160mm W 35mm T 1mm

Context: Square M5. East of bulwark/fundament.

Bovine probably.

Closed side-seam with flesh-grain stitch-holes. At least one hole for suspension.

**Cat. no. 84 BRM 0/4286**



**Sheath, mouth missing, cut/worn**

Type A3 1198–1248

L 190mm W 36mm T 1–2mm

Context: Square I12. Fillmasses.

Bovine leather.

Butted diagonal seam with flesh-grain stitch-holes, sewn with a thong (whip-stitching).

**Cat. no. 85 BRM 0/30472**



**Sheath, mouth missing**

Type A3 1198–1248 (over 1198)  
L 165mm W 37mm T 1mm

Context: Square K6. Under log course.

Ovri-caprine leather goat).

Closed side-seam with flesh-grain stitch-holes. Preserved wooden blade-protection.

**Cat. no. 86 BRM 0/41924**



**Sheath, mouth missing**

Type A3 1198–1248 (over 1198)  
L >130mm W 40mm T 1mm

Context: Square M6. Over passageway.

Bovine leather.

Closed side seam with flesh-grain stitches.

**Cat. no. 87 BRM 76/10429**



**Sheath, worn**

Type A3 1198–1248  
L 176mm W 35mm T 1mm

Context: below building 25.

Unidentified leathertype (worn).

Closed side-seam with flesh-grain stitch holes. 2 ruined slots for suspension.

**Cat. no. 88 BRM 242/65**



**Sheath, cut/worn**

Type A3 1198–1248 (possibly *c.* 1230–1248)

L 122mm W 35mm T 2mm

Context: in layer 56.

Bovine leather.

Closed side of back seam with flesh-grain stitch-holes. Four holes for suspension.



**Cat. no. 89 BRM 346/6373**



**Sheath, cut/worn**

Type A3 1200–1300  
L 188mm W 40mm T 1–2mm

Context: in layer 166.

Bovine leather.

Closed side-seam with flesh-grain stitch-holes.

**Cat. no. 90 BRM 0/7429**



**Sheath**

Type A3 1248–1332 (below 1332)  
L 90mm W 19mm T 1mm

Context: Square H11. In caisson 103.

Ovri-caprine leather (sheep).

Butted side-seam with edge-flesh stitch-holes. Impression after wooden blade protection.

**Cat. no. 91 BRM 0/11387**



**Sheath**

Type A3 1248–1332 (“In 1332”)

L 170mm W 48mm T 2–3mm

Context: Square H11. North of building 309 in evesdrop (*in situ*).

Unidentifiable leather species, scraped.

Closed side-seam with flesh-grain stitch-holes and 2 slots for suspension. Crude reuse of another object.

**Cat. no. 92 BRM 0/23513/2**



**Sheath, mouth (part of tip) missing**

Type A3 1248–1332 (below 1332)

L 100mm W 43mm T 1mm

Context: Square L8. In building 89.

Unidentified leather species.

Butted side-seam with edge-flesh stitch-holes.

**Cat. no. 93 BRM 0/24814**



**Sheath, cut/worn**

Type A3 1248–1332 (below 1332)  
L 145mm W 34mm T 1mm  
Context: Square K5. In passageway.  
Bovine leather.  
Closed side-seam with flesh-grain stitch-holes.

**Cat. no. 94 BRM 0/29209/14**



**Sheath, worn**

Type A3 1248–1332 (below 1332)  
L 120mm W 30mm T 1mm  
Context: Square K6. In public square.  
Ovri-caprine probably (sheep probably).  
Closed side-seam with flesh-grain stitch holes. Preserves wooden blade-protection. 2 small holes for suspension.



**Cat. no. 95 BRM 0/38841**



**Sheath**

Type A3 1248–1332 (over 1248)

L 118mm W 45mm T 1mm

Context: Square O5. In passageway.

Bovine leather.

Closed diagonal seam with flesh-grain stitch-holes, partly cut. 4 cuts – provisory holes for suspension.

**Cat. no. 96 BRM 76/8433**



**Sheath, tip missing, worn**

Type A3 1248–1332

L 145mm W 35mm T 2mm

Context: in building 17.

Unidentified leathertype (worn).

Closed side-seam with flesh-grain stitch-holes.

**Cat. no. 97 BRM 94/1176**



**Sheath, mouth missing**

Type A3 1248–1332  
L 130mm W 33mm T 1mm  
Context: in layer 73, building 8. Staple?  
Bovine leather.  
Closed centre-of-back seam with flesh-grain stitches-holes. Upper part cut.

**Cat. no. 98 BRM 110/1771/2**



**Sheath, worn**

Type A3 1248–c. 1400  
L 116mm W 30mm T 1mm  
Context: in layer 179.  
Unidentified leathertype (worn).  
Closed diagonal seam with flesh-grain stitch-holes. 3 holes for suspension (4 originally).

**Cat. no. 99 BRM 346/3931**



**Sheath**

Type A3 1300–1400  
L 132mm W 30mm L 1mm

Context: in layer 165.

Bovine leather.

Closed side-seam with flesh-grain stitch-holes. The tip is cut and resewn. Two small holes for suspension.

**Cat. no. 100 BRM 346/5416**



**Sheath, worn**

Type A3 1300–1400  
L 220mm W 40mm T 1mm

Context: in layer 160.

Ovri-caprine leather (goat).

Closed diagonal seam with flesh-grain stitch-holes. 2 slots for suspension.



**Cat. no. 101 BRM 0/6915/2**



**Sheath**

Type A3 1332–1413 (below 1413)

L 170mm W 36mm T 1mm

Context: Square F11. Bulwark/fundament.

Bovine leather.

Closed side-seam with flesh-grain stitch-holes. 2 slots for suspension. The sheath was treated with Lederweicher for photography.

**Cat. no. 102 BRM 0/8642**



**Sheath**

Type A3 1332–1413 (over 1332)

L 185mm W 40mm T 1mm

Context: Square G11. Below evesdrop.

Ovri-caprine probably (goat probably).

Closed side-seam with flesh-grain stitch-holes. One hole, probably for suspension.

**Cat. no. 103 BRM 0/11324**



**Sheath**

Type A3 1332–1413 (alternative dating: 1248–1332)

L 136mm W 33mm T 1mm

Context: Square G11. In caisson 106 (possibly caisson 102).

Ovri-caprine leather (goat).

Butted diagonal seam with flesh-grain stitch-holes. 4 slots at the middle of the sheath, 2 along each rim for suspension or decoration. Mouth is possibly cut.

**Cat. no. 104 BRM 0/14434**



**Sheath, part of mouth missing**

Type A3 1332–1413 (below 1413)

L 142mm W 35mm T 1–2mm

Context: Square L9. In bulwark/fundament.

Bovine probably.

Closed/butted side-seam with flesh-grain stitch-holes. 2 holes for suspension, thong preserved in one. Part of a dark impressed circle contains hair in the hair follicles. This burn-mark is probably original, not decoration.

**Cat. no. 105 BRM 0/14531**



**Sheath, tip missing**

Type A3 1332–1413 (Alternative dating: 1413–1476, “About 1413 but not under”)

L 118mm W 34mm T 1–2mm

Context: Square L9. In evesdrop.

Bovine leather.

Closed sideseam with flesh-grain stitch-holes. Stitch-holes in top indicate that the piece is reused. Two suspension slots at one side.

**Cat. no. 106 BRM 0/14925**



**Sheath**

Type A3 1332–1413 (below 1413)

L 180mm W 40mm T 1–2mm

Context: Square L8. In building.

Bovine leather.

Closed side-seam with flesh-grain stitches, probably sewn with a thong, with repair over the tip.



**Cat. no. 107 BRM 0/26369/8**



**Sheath**

Type A3 1332–1413 (over 1332)  
L 183mm W 38mm T 1–2mm

Context: Square K6. In building 430.

Bovine leather (the tip is ovri-caprine, goat).

Closed side-seam with flesh-grain stitch-holes. Two slots for suspension. The tip is repaired, sewn onto the sheath with a leather thong.

**Cat. no. 108 BRM 0/27583/6**



**Sheath**

Type A3 1332–1413 (over 1332)  
L 90mm W 22mm T 1mm

Context: Square K6. In building 430.

Ovri-caprine leather probably (goat probably).

Butted side-seam with edge-flesh stitch-holes. Four slits for suspension.

**Cat. no. 109 BRM 0/27992/6**



**Sheath, blade-part missing**

Type A3 1332–1413 (over 1332)

L 90mm W 46mm T 1–2mm

Context: Square I11. In building 215.

Bovine leather.

Closed side-seam, flesh-grain stitch-holes. One hole for suspension.

**Cat. no. 110 BRM 0/28047/2**



**Sheath, worn**

Type A3 1332–1413 (over 1332)

L 140 mm W 29mm T 1mm

Context: Square K7. In public square.

Unidentified leathertype (worn).

Closed side-seam with flesh-grain stitch-holes. Four holes for suspension (worn).

**Cat. no. 111 BRM 0/49784**



**Sheath, slashed/worn**

Type A3 1332–1413 (below 1413)  
L 190mm W 32mm T 2–3mm

Context: Square N3. In building 131.

Bovine leather.

Closed centre of back seam with flesh grain stitch-holes. Four holes for suspension. Slashed.

**Cat. no. 112 BRM 0/58230**



**Sheath, worn**

Type A3 1332–1413 (below 1413)  
L 230mm W 50mm T 1–2mm

Context: Square O3. In building 5.

Unidentified leathertype (worn).

Closed side-seam with flesh-grain stitch-holes.



**Cat. no. 113 BRM 0/64610**



**Sheath**

Type A3 1332–1413 (over 1332)  
L 175mm W 47mm T 2mm

Unidentified leathertype

Context: Square O4. In well 2.

Closed side-seam with flesh-grain stitch-holes with remains of thread. Four holes for suspension.

**Cat. no. 114 BRM 0/64684**



**Sheath, worn**

Type A3 1332–1413 (over 1332)  
L 140mm W 32mm T 1mm

Context: Square O4. In well 2.

Bovine leather.

Closed side-seam with flesh-grain stitch-holes. Shoemakers' stitching with thread preserved. Two slots for suspension.

**Cat. no. 115 BRM 76/4179**



**Sheath, mouth and tip missing**

Type A3            1332–1413  
L 85mm            W 34mm            T 1mm

Context: in drainage.

Unidentified leathertype (worn).

Closed sideseam with flesh-grain stitch-holes.

**Cat. no. 116 BRM 76/4769**



**Sheath, cut/worn**

Type A3            1332–1413  
L 160mm            W 35mm            T 1mm

Context: in building 8.

Ovri-caprine probably (goat probably).

Closed sideseam with flesh-grain stitch-holes. Two possible holes for suspension.

**Cat. no. 117 BRM 346/1753**



**Sheath, cut/worn**

Type A3            c. 1375–c.1425  
L 210mm            W 39mm            T 1–2mm

Context: in layer 61.

Bovine leather.

Closed side- or side of back seam with flesh-grain stitch-holes. Four slots for suspension.

**Cat. no. 118 BRM 76/22753**



**Sheath, tip missing, worn**

Type A3            1413–c. 1600  
L 135mm            W 29mm            T 1–2mm

Context: in building 33.

Bovine leather.

Closed side-seam with flesh-grain stitch-holes. Four slots for suspension.



**Cat. no. 119 BRM 0/56137**



**Sheath, worn**

Type A3 1476–1702 (over 1476)  
L 205mm W 28mm T 2mm

Context: Square P3.In building.

Bovine probably.

Butted diagonal seam with flesh-grain stitch-holes. Probable holes for suspension.

**Cat. no. 120 BRM 4/1309/2**



**Sheath**

Type A3 after 1215/25  
L 135mm W 37mm T 1mm

Context: in fillmasses.

Bovine leather.

Butted diagonal (?) seam, flesh-grain stitch-holes.

**Cat. no. 121 BRM 4/2345/2**



**Sheath, tip torn**

Type A3 after 1215/25

L 200mm W 35mm T 1mm

Context: in fillmasses.

Bovine leather.

Closed side-seam with flesh-grain stitch-holes. Remains after suspension-holes.

**Cat. no. 122 BRM 12/172**



**Sheath, worn**

Type A3 after c. 1400

L 110mm W 42mm T 2mm

Bovine leather.

Closed side-seam with flesh-grain stitch-holes. Reuse of another object.

**Cat. no. 123 BRM 20/982**



**Sheath, cut/worn**

Type A3 undatable  
L 115mm W 26mm T 2–3mm

Bovine leather probably.

Butted centre of back seam with flesh-grain stitch-holes. Four holes for suspension, torn in front. Small copper band used for repair near tip.

**Cat. no. 124 BRM 76/13000**



**Sheath, cut/worn**

Type A3 undatable  
L 115mm W 44mm T 2mm

Context: in passage 1.

Bovine leather.

Closed side-seam with flesh-grain stitch-holes. Two slots for suspension.



**Cat. no. 125 BRM 83/378**



**Sheath, worn**

Type A3 undatable  
L 135mm W 35mm T 2mm  
Context: from cleansing after machine.  
Bovine leather.  
Closed side-seam with flesh-grain stitch-holes. Two slots for suspension.

**Cat. no. 126 BRM 462/466/2**



**Sheath**

Type A3 undatable  
L 180mm W 35mm T 2mm  
Context: in layer 19.  
Bovine leather.  
Flesh-grain stitch-holes on one side, the other has edge-flesh stitch-holes. 3 holes for suspension. Reused object.

**Cat. no. 127 BRM 0/11251/2**



**Sheath, handle-part missing**

Type A.x 1248–1332 (below 1332)

L 150mm W 27mm T 1mm

Context: Square G11. North of caisson 102.

Bovine leather.

Side seam with flesh-grain stitch-holes. Possible A1-sheath.

**Cat. no. 128 BRM 0/7985**



**Sheath, upper part missing**

Type A.x 1332–1413 (over 1332)

L 215mm W 36mm T 1mm

Context: Square F11. In caisson 107.

Bovine leather.

Butted side seam with edge-flesh stitch-holes. Possible A1-sheath.

**Cat. no. 129 BRM 0/48637**



**Sheath, bladepart**

Type A.x 1332–1413 (below 1413)

L 102mm W 50mm T 1mm

Context: Square N3. Below building 433, on level with log course 2 in general fill layers.

Ovri-caprine leather (goat).

Butted centre-of-back seam, edge-flesh stitch-holes.

**Cat. no. 130 BRM 245/3407**



**Sheath, bladepart**

Type A.x 1350–mid/late 15th C

L 80mm W 32mm T 1mm

Context: in layer 225.

Leather species not identifiable (worn).

Side seam with flesh-grain stitch-holes. Wooden blade-protection preserved.



**Cat. no. 131 BRM 83/1254/2**



**Sheath, fragment**

Type A.x 1413–1476

L 155mm W 40mm T 1mm

Context: in layer 30, in drainage.

Bovine leather.

Closed centre-of-back seam, flesh-grain stitch-holes. Torn and worn with several cuts.

**Cat. no. 132 BRM 4/4327/2**



**Sheath, upper part missing**

Type A.x after 1215/25

L 170mm W 30mm T 1mm

Context: in drainage 7.

Ovri-caprine leather (goat).

Side seam. Possible A1-sheath.

**Cat. no. 133 BRM 76/12313**



**Sheath, cut along rim**

Type B1.1 1198–1248  
L 148mm W 32mm T 1–2mm

Context: west of building 21.

Bovine leather.

Closed side seam with flesh-grain stitch-holes. Two holes for suspension along the seam, wherein a thong is preserved. Stamped decoration of fleur-de-lis, random placing.

**Cat. no. 134 BRM 0/22095**



**Sheath, cut along rim**

Type B1.1 1248–1332 (over 1332, 0–5 cm)  
L 178mm W 45mm T 2–3 mm

Context: Square K8. In passageway under passagedeck (*in situ*).

Bovine leather.

Closed centre-of-back seam with edge-grain stitch-holes. Cut along one rim. Stamped decoration of zoomorph (lion?) in front. Back: impressed lines.



**Cat. no. 135 B 7097z**



**Sheath, small part of tip missing**

Type B1.1 1248–1413  
L 255mm W 55mm T 3mm  
Context: Old find, Kjøbmandstuens tomt.  
Bovine leather.

Closed centre-of-back (diagonally) seam with edge-grain stitch-holes. Parts of thread preserved. Stamped decoration: fleur-de-lis, castle-triple-towered and shield with three leopards in front supplemented with impressed lines and foliate. Back: impressed lines. Probably for a set of knives, for hunting or serving. Previously published: Grieg 1933:246, fig. 219; Mathiesen 1335:10–13, fig. 3.

**Cat. no. 136 BRM 0/3196**



**Sheath**

Type B1.1 1332–1413 (1332–1393)  
L 158mm W 33mm T 1mm  
Context: Square L11. In building 329, 0–5 cm over floor (*in situ*).  
Bovine and ovri-caprine leather (goat).

Two reused pieces sewn together with closed seam, flesh-grain stitch-holes. Both pieces are decorated with stamps of fleur-de-lis. Earlier accession number: BR 1755.



**Cat. no. 137 BRM 0/7496**



**Sheath**

Type B1.1 1332–1413  
L 175mm W 35mm T 2mm

Context: Square G11. Below passageway.

Bovine leather.

Closed centre-of-back seam with edge-grain stitch-holes. Stamped decoration of fleur-de-lis in front, supplemented with impressed lines. Back: impressed lines.

**Cat. no. 138 BRM 0/8218**



**Sheath, handle-part**

Type B1.1 1332–1413 (over 1332)  
L 60mm W 33mm T 1–2mm

Context: Square F11. In layer 112.

Bovine leather.

Centre-of-back seam with flesh-grain stitch-holes. Handle-part with knife-handle preserved. Stamped decoration of fleur-de-lis, supplemented with impressed lines. Earlier accession number: BR 3536. Previously published: Nøttveit 2006:51, fig. 5.

**Cat. no. 139 BRM 0/10395/2**



**Sheath, cut**

Type B1.1 1332–1413

L 165mm W 21mm T 1mm

Context: Square G11 (H11). Below building 322.

Bovine leather.

Closed centre-of-back seam with flesh-grain stitch-holes. 4 slots for suspension at back. Stamped decoration: row of stamps with the inscription “ave”. Probable dagger sheath possibly reused as knife sheath. Cut, and mouth partly missing.

**Cat. no. 140 BRM 0/13499**



**Sheath, tip missing**

Type B1.1 1332–1413 (over 1393)

L 145mm W 21mm T 1mm

Context: Square I10. Fillmasses.

Bovine leather.

Butted centre-of-back seam with edge-grain stitch-holes. Two slits for suspension preserved at back. Stamped decoration of four petals, supplemented with impressed lines in front. Cut and parts missing. Possible dagger sheath.



**Cat. no. 141 BRM 0/13595**



**Sheath**

Type B1.1 1332–1413 (over 1393)

L 185mm W 30mm T 3mm

Context: Square K10 (L10). Fillmasses.

Bovine leather.

Butted centre-of-back seam with edge-grain stitch-holes. Stamped decoration of lion, heavily supplemented with impressed foliate and lines. Back: foliate.

**Cat. no. 142 BRM 0/14118**



**Sheath, cut**

Type B1.1 1332–1413 (below 1413, 0–5 cm)

L 210mm W 45mm T 1–2mm

Context: Square K9. In building 359 (*in situ*).

Bovine leather.

Butted centre-of-back seam with edge-grain stitch-holes. Four holes for suspension at back. Stamped decoration of fleur-de-lis, shield with zoomorph in front, lion in back. Earlier accession number: BR 4072.



**Cat. no. 143 BRM 0/27263/4**



**Sheath, fragment of blade-part**

Type B1.1 1332–1413 (below 1413)

L 82mm W 30mm T 1mm

Context: Square L6. In passageway.

Bovine leather probably.

Closed side-of-back seam with flesh-grain stitch-holes. Stamped decoration of fleur-de-lis heavily supplemented with impressed lines. Back: impressed lines.

**Cat. no. 144 BRM 4/3330**



**Sheath, cut/worn**

Type B1.1 after 1215/25

L 173mm W 25mm T 1mm

Context: in fillmasses.

Bovine leather.

Closed centre-back seam with flesh-grain stitch-holes. Stamped decoration of lion passant and zoomorph.

**Cat. no. 145 BRM 4/3499**



**Sheath**

Type B1.1 after 1215/25  
L 135mm W 35mm T 1mm

Context: in fillmasses.

Bovine leather.

Closed side seam with flesh-grain stitch-holes. Four holes for suspension. Stamped decoration, in front two vertical rows of fleur-de-lis supplemented with impressed lines. Back: impressed lines.

**Cat. no. 146 BRM 708/1115**



**Sheath, blade-part**

Type B1.1 Undated  
L 106mm W 21mm T 1mm

Context: (Bryggen site).

Bovine leather.

Closed centre of-back seam with flesh-grain stitch-holes with thread preserved. Stamped decoration, possible lion-motif, but not discernable. Possible dagger sheath.

**Cat. no. 147 BRM 0/78582**



**Sheath, tip missing**

Type B1.2 (1170/71–1198) Dating cannot be correct, compared to parallel finds.

L 145mm W 33mm T 3mm

Context: Square N1. In well 13.

Bovine leather.

Butted side-of-back seam with edge-grain stitch-holes. 3 holes for suspension. Repetitive stamped decoration of fleur-de-lis.

**Cat. no. 148 BRM 0/2494**



**Sheath, fragments**

Type B1.2 1332–1413 (1332–1393)

L (80/75mm) W 45 T 1mm

Context: Square H12. In building 278.

Bovine leather.

Fragments of handlepart and blade part. Repetitive stamped decoration of cinque-foils supplemented with impressed lines. Earlier accession number: BR 1470.



**Cat. no. 149 BRM 0/3517**



**Sheath, fragments**

Type B1.2 1332–1413 (about 1413, alternative dating: 1413–1476)

L 106/55/45mm W 40mm T 1mm

Context: Square I12. In bulwark/fundament.

Bovine leather.

Repetitive stamped decoration of cinque-foils. Earlier accession number: BR 1470 BR 1592.

**Cat. no. 150 BRM 0/14587**



**Sheath, tip missing, cut/worn**

Type B1.2 1332–1413 (below 1413)

L 155mm W 33mm T 2mm

Context: Square L9.

Bovine leather.

Closed side-of-back seam with flesh-grain stitch-holes. Four slots for suspension. Repetitive stamped decoration of fleur-de-lis.

**Cat. no. 151 BRM 0/81513**



**Sheath, small part of tip missing**

Type B1.2 1332–1413

L 180 mm W 29mm T 1–2mm

Context: Square M9. Over fundament/bulwark.

Bovine leather.

Butted centre-back seam with edge-grain stitch-holes. Repetitive stamped decoration of fleur-de-lis.

**Cat. no. 152 BRM 0/25622**



**Sheath, fragment**

Type B1.2 1413–1476 (over 1413)

L 125mm W 42mm T 2mm

Context: Square L6.

Bovine leather.

Fragment with flesh-grain stitch-holes at both rims. Resewn? Repetitive stamped decoration and cinque-foils, supplemented with impressed lines.

**Cat. no. 153 BRM 0/47734**



**Sheath, part of mouth missing**

Type B1.2 1413–1476  
L 184mm W 32mm T 2mm

Context: Square N3. In building 426.

Bovine leather.

Butted side-of-back seam with edge-grain stitch-holes. 2 holes for suspension at back. Repetitive stamps of 6-foils supplemented with impressing.

**Cat. no. 154 BRM 104/01108**



**Sheath, part of mouth missing**

Type B1.2 c. 1300–c. 1400  
L 172mm W 26mm T 1–2mm

Context: in layer 38 in fundament 21.

Bovine leather.

Butted side-of-back seam with edge-grain stitch-holes, four suspension slots at back. Decorated with repetitive stamps of foils supplemented with impressing in front, back: fleur-de-lis stamps. Tip is resewn, mouth is cut over the suspension holes.



**Cat. no. 155 BRM 0/95317**



**Sheath**

Type B1.2      Undatable  
L 174mm      W 40mm      T 1–2 mm

Context: (Bryggen site).

Bovine leather.

Butted side-of-back (?) seam with edge-grain and flesh-grain stitch holes. 4 holes for suspension. Decorated by repetitive pattern of fleur-de-lis stamps.

**Cat. no. 156 BRM 0/41171**



**Sheath**

Type B2.1      1198–1248 (about 1248, alternative dating: 1248–1332)  
L 190mm      W      T 2–3mm

Context: Square M5. In building 466 (*in situ*).

Bovine leather.

Butted centre-of-back seam (blade-part) and side-of-back seam (handle-part), edge-grain stitch-holes. Two suspension holes at side flap. Impressed decoration: framed lattice pattern with dots at front, lines at back.

**Cat. no. 157 BRM 76/10366**



**Sheath**

Type B2.1 1198–1248  
L 295mm W 29/45mm T 1–2mm

Context: in building 23.

Bovine leather.

Butted centre-of-back seam, edge-grain stitch-holes. Two suspension holes at side flap. Impressed decoration: framed lattice pattern with dots at front, lines at back. Unusually long and narrow, fitting a slender blade.

**Cat. no. 158 BRM 76/10789**



**Sheath, tip and part of handle missing**

Type B2.1 1198–1248  
L 195mm W 28mm T 1–2mm

Context: in fillmasses.

Bovine leather.

Butted centre-of-back seam with edge-grain stitch-holes (blade-part) and side-of-back seam with edge-flesh stitch-holes (handle-part). Side-flap and tip missing. Impressed decoration: framed lattice pattern with dots at front, lines at back.

**Cat. no. 159 BRM 76/12803**



**Sheath, tip and part of handle missing, slashed**

Type B2.1 1198–1248  
L 135mm W 33/50mm T 2mm  
Context: in passageway 1.

Bovine leather.

Butted centre-of-back seam (blade-part) and side-of-back seam (handle-part), edge-grain stitch-holes. Two suspension holes at side flap. Impressed decoration: framed lattice pattern with dots at front, lines at back. Slashed.

**Cat. no. 160 BRM 0/2686**



**Sheath**

Type B2.2 1248–1332  
L 270mm W 37mm T 2–3mm  
Context: Square H12. In passageway.

Bovine leather probably.

6 holes for suspension, two of them at the blade/handle transition. Butted centre-of-back seam with edge-grain stitch-holes. Impressed decoration: framed lattice pattern with dots at front, lines at back. Earlier accession number: BR 1472.



**Cat. no. 161 BRM 0/11153**



**Sheath**

Type B2.2 1248–1332  
L 233mm W 35mm T 2mm

Context: Square H11. In caisson 103.

Bovine leather.

Closed centre-of-back seam with flesh-grain stitch-holes. 4 holes for suspension at back. Faint traces of impressed decoration with dots.

**Cat. no. 162 BRM 0/11216**



**Sheath**

Type B2.2 1248–1332 (alternative dating: 1332–1248)  
L 250mm W 40mm T 1mm

Context: Square G11. In caisson 102.

Bovine leather.

Closed centre-of-back seam with flesh-grain stitch-holes. 4 holes for suspension at back. Impressed decoration: foliate.

**Cat. no. 163 BRM 0/1537**



**Sheath, fragmentised after excavation**

Type B2.3 1248–1332 (alternative dating: 1413.)

L 210mm W 45mm T 1–2mm

Context: Square K12.

Bovine leather.

Butted side-of-back seam, edge-grain stitch-holes. Impressed decoration: in front: 3 zoomorphs in floral tendrils at blade-part, zoomorph under arch at handle part. Back: Heraldic: see also cat no 164. By-sheath at back of handle-part. Earlier accession number: BR 1008.

**Cat. no. 164 BRM 076/19582**



**Sheath**

Type B2.3 1248–1332

L 185mm W 50mm T 2–3mm

Context: in layer 40.

Bovine leather.

Butted side-of-back seam, edge-grain stitch-holes. Impressed decoration: in front: 3 zoomorphs in floral tendrils at blade-part, zoomorph under arch at handle part. Back: Heraldic: see also cat no 163. By-sheath at side-of-back handle-part.

**Cat. no. 165 BRM 0/5504**



**Sheath, frontside**

Type B2.3 1332–1413 (below 1393)

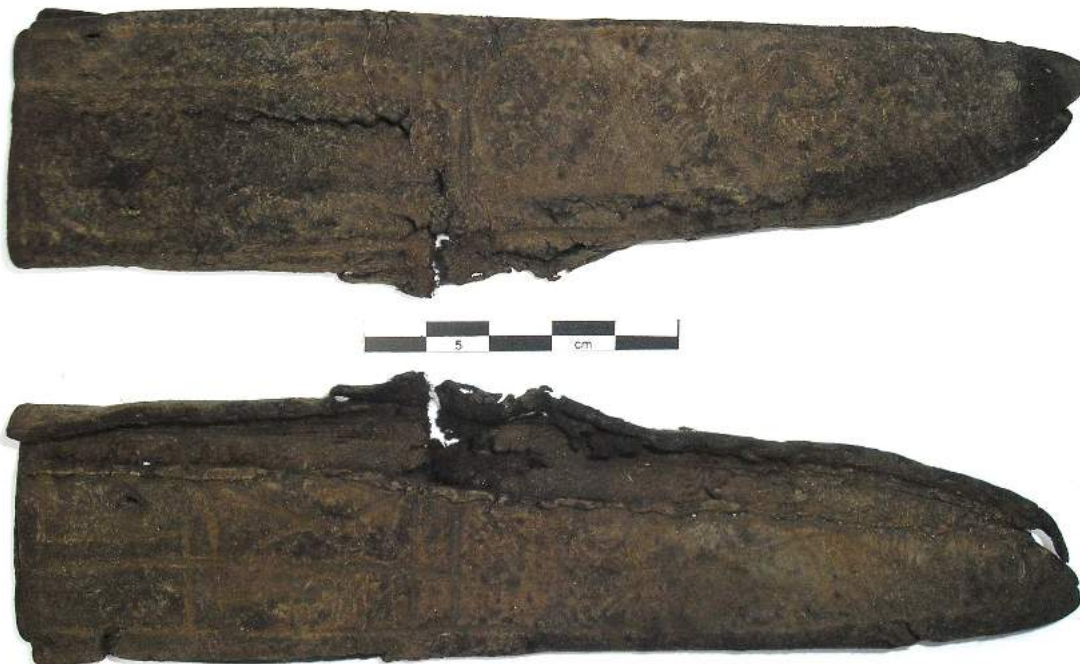
L 260mm W 65mm T 2mm

Context: Square K11. In building 326.

Bovine leather.

Butted side-of-back seam, edge-grain stitch-holes. Front side and one rim preserved. By-sheath at side-of-back handle-part. Impressed decoration: 2 zoomorphs in floral tendrils at blade-part, faint at handle part. Probably sheath for set of several knives, for hunting or serving (eating). Earlier accession number: BR 3277.

**Cat. no. 166 BRM 0/13498**



**Sheath**

Type B2.3 1332–1413 (over 1393)

L 170 mm W 40mm T 2mm

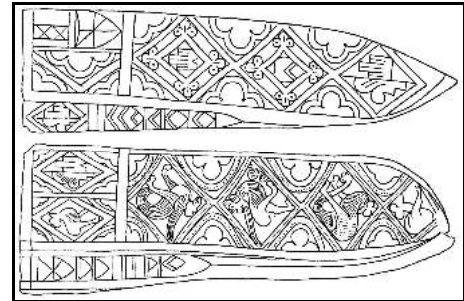
Context: Square I10. Fillmasses.

Bovine leather.

Butted side-of-back seam, edge-grain stitch-holes. Impressed decoration faint, but at least 2 zoomorphs in floral tendrils at blade-part. Suspension holes at back and front (thong has been twined around the sheath).



**Cat. no. 167 B 6237**



*Outline of the motifs (after Mathisen 1935:11)*

**Sheath**

Type B2.3            Undatable  
L 300mm            W 65mm            T 2mm

Context: Old find, Leppens tomt.

Bovine leather.

Butted side-of-back seam, edge-grain stitch-holes. Impressed decoration: in front: 4 zoomorphs in floral tendrils at blade-part, zoomorph in lozenge at handle part, ditto castle triple towered/fleur-de-lis. By-sheaths at each side of handle-part, with several heraldic shields. Probably sheath for set of several knives, for hunting or serving (eating). Previously published: Koren-Wiberg 1908: 151, 153; Grieg 1933: 246–247, fig.220; Mathiesen 1935: 10–13; Blomqvist 1938: 157, fig. 31.

**Cat. no. 168 BRM 76/21205**



**Sheath, part of handle missing**

Type B2.x            1198–1248  
L 143mm            W 25mm            T 1mm

Context: in bulwark/fundament, layer 51.

Bovine leather.

Closed centre-of-back seam, flesh-grain stitch-holes. 4 small holes for suspension. Impressed decoration: lines, geometric.

**Cat. no. 169 BRM 110/5400**



**Sheath, blade-part**

Type B2.x 1stQ1200–1248  
L 95mm W 37mm T 2mm

Context: in layer 273.

Bovine leather.

Butted side-of-back seam, edge-grain stitch-holes. Blade-part. Impressed decoration: lines, geometric triangles with hatching.

**Cat. no. 170 BRM 237/3509**



**Sheath, cut/worn**

Type B2.x 1stQ1200–1248  
L 140mm W 20mm T 2mm

Context: in layer 60, fundament 48.

Bovine leather.

Butted centre-of-back seam, edge-grain stitch-holes. 1 or 2 holes for suspension at back. Impressed decoration: lines, foliate or zoomorphs (worn).

**Cat. no. 171 BRM 0/8437**



**Sheath, tip missing**

Type B2.x 1248–1332 (over 1248)  
L 220mm W 38mm T 1–3mm

Context: Square I11. In caisson 101.

Bovine leather probably.

Butted centre-of-back seam, edge-grain stitch-holes. 5 holes for suspension at back. Impressed decoration: Dragon at blade-part, heraldic at handle-part. Back: lines.

**Cat. no. 172 BRM 0/9178**



**Sheath**

Type B2.x 1248–1332 (over 1248)  
L 170mm W 26mm T 1mm

Context: Square I11. West of caisson 101.

Bovine leather.

Butted centre-of-back seam, edge-grain stitch-holes. 4 holes for suspension at back. Impressed decoration: foliate at blade-part, dragon at handle, back: lines, triangles.



**Cat. no. 173 BRM 0/16354/2**



**Sheath, handle-part**

Type B2.x 1248–1332 (below 1332)

L 95mm W 33mm T 2mm

Context: Square K9. Below building 369.

Bovine leather.

Butted centre-of-back seam, edge-grain stitch-holes. 2 suspension holes. Impressed decoration: foliate.

**Cat. no. 174 BRM 0/22365**



**Sheath, part of tip missing**

Type B2.x 1248–1332 (about 1332)

L 120mm W 30mm T 2mm

Context: Square L8. In evesdrop.

Bovine leather.

Butted centre-of-back seam, edge-grain stitch-holes. 6 slots for suspension (thong twined around sheath).

Impressed decoration: stylised letter “A”, at least two.

**Cat. no. 175 BRM 83/01522**



**Sheath**

Type B2.x 1248–1332  
L 150mm W 41mm T 2mm

Context: in layer 66.

Bovine leather.

Closed side seam with flesh-grain stitch-holes. 4 holes for suspension (two at each side). Impressed decoration: lines, geometric, herringbone.

**Cat. no. 176 B 7097æ**



*Dragon motif on the blade-part of the sheath, now missing (Not in scale)(after Mathisen 1935:17)*

**Sheath, handle-part**

Type B2.x 1248–1413  
L (78)mm T 2mm

Context: Old find, Kjøbmandstuens tomt.

Bovine leather.

Edge-grain stitch-holes. Blade-part with 2 slots for suspension. Impressed decoration: lines. Previously published: Grieg 1933:247 (with wrong museum number); Mathisen 1935:10-13, fig. 8.

**Cat. no. 177 BRM 0/1523**



**Sheath, part of tip missing**

Type B2.x 1332–1413 (1393–1413)

L 160mm W 39mm T 2mm

Context: Square G12. In public alley.

Bovine leather.

Butted side seam with edge-grain stitch-holes. 2 holes for suspension. Impressed decoration: lattice with pricks.

Earlier accession number: BR 1010.

**Cat. no. 178 BRM 0/1903**



**Sheath, worn**

Type B2.x 1332–1413 (1332–1393)

L 216mm W 30mm T 1mm

Context: Square G12. In caisson 97 (fillmasses)

Bovine leather.

Butted centre-of-back seam, edge-grain stitch-holes. Cut and worn. Impressed decoration faint. Earlier accession number: BR 1166.



**Cat. no. 179 BRM 0/2696**



**Sheath, mouth missing**

Type B2.x 1332–1413 (1332–1393)

L 164mm W 30mm T 2mm

Context: Square H12. In public alley.

Bovine leather.

Closed side-of-back with flesh-grain stitch-holes. 4 holes for suspension at back, by-sheath at back. Impressed decoration: floral, lines with some dots. Earlier accession number: BR 1473.

**Cat. no. 180 BRM 0/6765**



**Sheath, tip missing**

Type B2.x 1332–1413 (below 1413)

L 114mm W 37mm T 1mm

Context: Square F11. In bulwark/fundament.

Bovine leather.

Butted centre-of-back seam, edge-grain stitch-holes. 4 suspension holes at back. Impressed decoration: heraldic and lines.

**Cat. no. 181 BRM 0/7898**



**Sheath, blade-part**

Type B2.x 1332–1413 (over 1332)

L 123mm W 24mm T 1mm

Context: Square F11. Below bulwark/fundament.

Bovine leather.

Closed sideseam with flesh-grain stitch-holes. Impressed decoration: floral supplemented with dots.

**Cat. no. 182 BRM 0/8091**



**Sheath, handle-part**

Type B2.x 1332–1413

L 84mm W 39mm T 1mm

Context: in layer 106.

Bovine leather probably.

Closed centre-of-back with flesh-grain stitch-holes. Handle-part. At least 2 slots for suspension.

Impressed decoration: 2 dragons, lines.

**Cat. no. 183 BRM 0/38228**



**Sheath, worn**

Type B2.x 1332–1413 (over 1332)  
L 195mm W 31mm T 1mm

Context: Square O4. In evesdrop.

Bovine leather.

Closed centre-of-back with flesh-grain stitch-holes. Impressed decoration lattice pattern, lines.

**Cat. no. 184 BRM 76/3576**



**Sheath, fragment of bladepart**

Type B2.x 1332–1413  
L 10mm W 34mm T 1-2mm

Context: in building 11.

Bovine leather.

Closed side-of-back seam, flesh-grain stitch-holes. Impressed decoration: front: worn, Back: arches (possible B2.3 sheath?).



**Cat. no. 185 BRM 76/5154**



**Sheath**

Type B2.x 1332–1413

L 157mm W 40mm T 2mm

Context: in building 11.

Ovri-caprine leather probably (goat probably).

Closed side-of-back seam, flesh-grain stitch-holes. 4 slots for suspension at back. Impressed decoration supplied by dots: heraldic, lines.

**Cat. no. 186 BRM 0/47812/5**



**Sheath, fragment of handle-part**

Type B2.x 1413–1476 (below 1476)

L 57mm W T 1mm

Context: Square N4. In building 110.

Bovine leather.

Edge-grain stitch-holes. Impressed decoration: lines, herringbone.

**Cat. no. 187 BRM 0/47812/6**



**Sheath, part of tip missing**

Type B2.x 1413–1476 (below 1476)

L 160mm W 34mm T 1mm

Context: Square N4. In building 110.

Bovine leather probably.

Closed side-of-back seam, flesh-grain stitch-holes. Impressed decoration: only faint traces.

**Cat. no. 188 BRM 0/83843**



**Sheath, part of handle**

Type B2.x Undatable

L 80mm W 52mm T 1mm

Context: Square N9.

Bovine leather.

Butted side-of-back seam, edge-grain stitch-holes. Preserved thread. Impressed decoration: plaits.

**Cat. no. 189 BRM 0/95326**



**Sheath, tip missing**

Type B2.x      Undatable  
L 125mm      W 31mm      T 1mm

Context: (Bryggen site).

Undecidable leather type.

Butted seam of flesh-grain stitch-holes. Weak traces of decoration, possible lining.

**Cat. no. 190 BRM 6/341/1**



**Sheath with ruined mouth-part**

Type B2.x      Undatable  
L 180mm      W 40mm      T 2–3mm

Context: in fillmasses, building H.

Bovine leather.

Closed side-seam with flesh-grain stitch-holes. Impressed decoration: horizontal lines.



**Cat. no. 191 BRM 6/341/2**



**Sheath, fragmented**

Type B2.x      Undatable  
L 165mm      W 30mm      T 2mm

Context: in fillmasses, building H.

Bovine leather.

Closed side-of-back seam, flesh-grain stitch-holes. Impressed decoration: horizontal lines.

**Cat. no. 192 B 6385e**



**Sheath**

Type B2.x      Undatable  
L 190mm      W 32mm      T 2mm

Context: Old find, southern part of Bryggen.

Bovine leather.

Closed centre-of-back seam, flesh-grain stitch-holes. Impressed decoration: lattice. Previously published: Grieg 1933: 248; Mathiesen 1935:8, 13.

**Cat. no. 193 BRM 0/14254**



**Sheath**

Type B3 1332–1413 (below 1413)

L 195mm W 45mm T 1mm

Context: Square K9. Under building 359.

Bovine leather.

Closed side seam with flesh-grain stitch-holes. Incised decoration: lines, herringbone, pricks. The sheath has a narrow flap like B2.1-sheaths, but lacks the suspension holes and the characteristic sewing.

**Cat. no. 194 BRM 0/15532**



**Sheath, partly cut**

Type B3 1332–1413 (over 1332)

L 190mm W 38mm T 2mm

Context: Square K9.

Bovine leather probably.

Closed centre-of-back seam, flesh-grain stitch-holes. Incised decoration: worn but a wavy pattern is discernible. 2 holes for suspension, but the sheath is cut or modified below these.

**Cat. no. 195 BRM 346/5818**



**Sheath, blade-part**

Type B3 1375–1425

L 115mm W 33mm T 1mm

Context: in layer 62.

Bovine leather.

Closed side(?) seam with flesh-grain stitch-holes. Incised decoration: lines and lattice, worn.

**Cat. no. 196 BRM 0/23811**



**Sheath with lining. Blade-part and tip missing**

Type B3 1413–1476 (“in level or just below 1476”)

L 95mm W 30mm T 3mm

Context: Square L5.

Bovine leather.

Butted centre-of-back seam. edge-grain stitch-holes. Incised decoration of repetitive small notches, probably imitating type B1.2.



**Cat. no. 197 BRM 76/22228**



**Complete sheath with by-sheaths**

Type B3            Undatable  
L 149mm          W 29mm          T 1mm

Context: "top layer".

Bovine leather.

Closed centre-of-back seam, flesh-grain stitch-holes. Four holes for suspension in back. Incised lines supplemented with impressed lattice. Additional hole in front for by-knife, and a smaller implement (needle, awl etc).

**Cat. no. 198 BRM 110/2186**



**Sheath, partly cut (reuse of another object)**

Type B3            Undatable  
L 137mm          W 31mm          T 2mm

Context: stray find.

Bovine leather probably.

Closed side seam of flesh-grain stitch-holes, partly cut away. One hole for suspension (one probably cut away with the seam). Clearly a reuse of another object, sewn and fitted with holes for suspension. Incised decoration: foliate.

**Cat. no. 199 BRM 0/1538**



**Sheath, fragmented after excavation**

Type B4.1 1248–1332

L 165mm W 40mm T 2–3mm

Context: Square F12. In caisson 95 (fill-masses).

Bovine leather.

Butted side seam with edge-grain stitch-holes. Four slots for suspension. Embossed decoration. Front: animals in floral tendrils. Back: fleur-de-lis and birds executed in "Escher" style. Earlier accession number: BR 1017.

Previously published: Herteig 1960:184, fig. 67; Nøttveit 2006c:50–51, fig. 1–2.

**Cat. no. 200 BRM 0/8296**



**Sheath, tip and part of back missing**

Type B4.1 1332–1413 (over 1332)

L 230mm W 45mm T 2mm

Context: Square F11. In layer 110.

Bovine leather.

Butted centre-of back seam with edge-grain stitch-holes. At least one hole for suspension. Embossed decoration: Front: row of birds in floral tendrils/lozenges. Back: Impressed lines.



**Cat. no. 201 BRM 0/15027**



**Sheath, repaired**

Type B4.x 1248–1332 (below 1332)

L 175mm W 30mm T 2mm

Context: Square L10. In caisson 108.

Bovine leather.

Closed side(?) seam with flesh-grain stitch-holes. Probably resewn, modified as repair. Embossed decoration: two dragons (partly worked from the flesh-side). Previously published: Nøttveit 2006c:52, fig 6–7.

**Cat. no. 202 BRM 0/8093**



**Sheath**

Type B4.x 1332–1413 (over 1332)

L 210mm W 44mm T 1–2mm

Context: Square F11. In layer 106.

Bovine leather.

Butted centre-of-back seam, edge-grain stitch-holes. Embossed decoration: front: Animals, zoomorphs in floral tendrils (hunting scene). Back: impressed lines.



**Cat. no. 203 BRM 0/9075**



**Sheath**

Type B4.x 1332–1413 (over 1332)  
L 195mm W 35mm T 1–3mm

Context: Square G11. In caisson 106.

Bovine leather.

Butted centre-of-back seam, edge-grain stitch-holes. Embossed decoration: front: Dragons in floral tendrils.

Back: impressed lines. Earlier accession number BR 3549. Previously published: Nøttveit 2006b:fig 1.

**Cat. no. 204 BRM 0/36899**



**Sheath, blade-part**

Type B4.x 1332–1413 (over 1332)  
L 145mm W 34mm T 2–3mm

Context: Square O5. In building 93.

Bovine leather.

Butted centre-of-back seam, edge-grain stitch-holes. Embossed decoration: front: Animals, zoomorphs in floral tendrils (hunting scene). Back: impressed lines.

**Cat. no. 205 BRM 0/81399**



**Sheath, tip and part of blade-part missing**

Type C1 1198–1248

L 220mm W 40mm T 1mm

Context: Square P7. In well 24.

Ovri-caprine leather.

Closed side-seam with flesh-grain stitch-holes. Leather belt at handle/blade transition. Decorated with embroidery in front handle (cross-stitches) and along rims. Found with knife inside (now missing).

**Cat. no. 206 BRM 76/21132/3**



**Sheath, tip missing**

Type C1 1198–1248

L 270mm W 40mm T 1mm

Context: in bulwark/fundament (layer 51).

Bovine leather.

Closed side-seam with flesh-grain stitch-holes. Slit for small belt at handle/blade transition. Decorated with embroidery in front (cross-stitches) and along rims.



**Cat. no. 207 BRM 0/15433**



**Sheath, tip missing**

Type C1 1248–1332 (over 1332, 0–5 cm)

L 169mm W 39mm T 1mm

Context: Square I9. (*in situ*).

Bovine leather.

Closed side-seam with flesh-grain stitch-holes, sewn with thong (at handle-part). Slit for small belt at handle/blade transition. 4 suspension holes below mouth. Decorated with embroidery along rims.

**Cat. no. 208 BRM 0/16975/2**



**Sheath, mouth missing**

Type C1 1248–1332 (below 1332)

L 20mm W 34mm T 1mm

Context: Square I9. In caisson 108.

Ovri-caprine leather (goat).

Closed side-seam with flesh-grain stitch-holes. Slit for small belt at handle/blade transition. Decorated with fretting in front and embroidery in front and along rims. Found together with unidentified leather piece (see Ulriksen 1992:fig. 80), and has coinciding seams with this leather object. Are such leather objects somehow connected to C.1 sheaths?



**Cat. no. 209 BRM 110/6583**



**Sheath, mouth missing**

Type C1            Undatable

L 170mm        W 31mm        T 1mm

Context: stray find.

Ovri-caprine leather.

Closed side-seam with flesh-grain stitch-holes. Decorated with fretting in front and embroidery in front (cross-stitches) and along rims.

**Cat. no. 210 BRM 0/1804/2**



**Sheath, blade-part (front) missing**

Type C2            1332–1413 (1332–1393)

L 265mm        W 55mm        T 1-2mm

Context: Square G12. In caisson 98 (fillmasses).

Leather species not identifiable (conservation).

Closed side-seam with flesh-grain stitch-holes. Decorated with fretting and embroidery in front and along rims.

Earlier accession number: BR 1160.

**Cat. no. 211 BRM 0/38339**



**Sheath, mouth missing**

Type C2            1332–1413 (over 1332)  
L 250mm          W 53mm            T 1mm

Context: Square M5. In passageway.

Ovri-caprine leather (sheep probably)

Closed side-seam with flesh-grain stitch-holes. Decorated with fretting and embroidery in front and along rims. Inserted leather band behind the fretting in front.

**Cat. no. 212 BRM 4/2516/2**



**Sheath, mouth missing**

Type C2            after 1215/25  
L 205mm          W 45mm            T 1mm

Context: in fillmasses.

Ovri-caprine leather (goat).

Closed side-seam with flesh-grain stitch-holes. Decorated with embroidery and fretting along rims. Inserted leather behind the front side (like half a lining). Rows of slits at the handle-part have probably contained leather bands or other threads for decoration. Although within the same criteria, this sheath is slightly diverging from cat. nos. 210-211, but seems to have the same distribution in Northern Europe.



**Cat. no. 213 BRM 76/19583**



**Sheath, partly cut**

Type D1 1248–1332  
L 208mm W 47mm T 1–2mm

Context: Layer 40.

Ovri-caprine leather (sheep).

Riveted handle-part, rim ferrule on blade-part (only impression left). 4 holes for suspension. Paired lunate slits at handle, fringes along blade-part rim.

**Cat. no. 214 BRM 110/1184**



**Sheath**

Type D1 1248–c. 1400  
L 208mm W 35mm T 1–2mm

Context: in fundament 32, layer 137.

Ovri-caprine leather (goat).

Handle-part sewn with thong probably. 4 holes for suspension. Rim ferrule on blade-part (only impression left). Fringes near tip.



**Cat. no. 215 BRM 0/7175/2**



**Sheath**

Type D1 1332–1413 (1332–1393)

L 144mm W 30mm T 1mm

Context: Square G11. In caisson 107.

Ovri-caprine leather probably.

Riveted/fitted handle-part, rim ferrule on blade-part (only impression left). Fringes along blade-part rim.

**Cat. no. 216 BRM 0/7386**



**Sheath**

Type D1 1332–1413 (below 1413)

L 175mm W 33mm T 1mm

Context: Square F11. Below bulwark/fundament.

Ovri-caprine leather probably (sheep probably).

Handle-part riveted or sewn with thong, rim ferrule on blade-part (only impression left). Fringes near tip.

**Cat. no. 217 BRM 0/7777**



**Sheath, partly broken**

Type D1 1332–1413 (below 1413)

L 165mm W 35mm T 2mm

Context: Square E11. Below bulwark/fundament.

Ovri-caprine leather probably (sheep probably).

Riveted handle-part, rim ferrule on blade-part. Fringes along blade-part rim.

**Cat. no. 218 BRM 0/13496**



**Sheath, cut along rim**

Type D1 1332–1413 (over 1393)

L 240mm W 40mm T 2mm

Context: Square I10. Fillmasses.

Ovri-caprine leather probably (sheep probably).

Rim ferrule impression along the whole rim, possible holes after rivets.



**Cat. no. 219 BRM 0/13497**



**Sheath, tip and part of handle-part missing**

Type D1 1332–1413 (over 1393)

L 180mm W 32mm T 2mm

Context: Square I10. Fillmasses.

Ovri-caprine leather probably (goat probably).

Rim ferrule impression along blade-part.

**Cat. no. 220 BRM 0/49667**



**Sheath, handle-part missing**

Type D1 1413–1476 (below 1476)

L 143mm W 36mm T 1mm

Context: Square L4. Below building 181.

Leather species not identified (worn).

Riveted handle-part, rim ferrule at blade-part.



**Cat. no. 221 BRM 83/01155**



**Sheath**

Type D1 1413–1476

L 245mm W 45mm T 1mm

Ovri-caprine leather probably (sheep probably).

Riveted handle-part, rim ferrule at blade-part. Two suspension-holes at lower part of the handle-part. Fringes along blade-part rim.

**Cat. no. 222 BRM 4/1914**



**Sheath, partly cut**

Type D1 Undatable

L 170mm W 27mm T 1mm

Context: in fillmasses.

Bovine leather probably.

Rim ferrule at blade-part possibly extending to handle-part. Partly preserved.

**Cat. no. 223 BRM 0/95318**



**Sheath, partly cut**

Type D1            Undatable

L 285mm          W 35mm          T 1–2mm

Context: (Bryggen site).

Ovri-caprine leather probably (sheep probably).

Handle-part sewn with thong, rim ferrule on blade-part (only impression left). Fringes along blade-part rim.

**Cat. no. 224 BRM 0/80204**



**Sheath, mouth and part of handle-part missing**

Type D2            1120–1170 (in 1170)

L 210mm          W 50mm          T 1–2mm

Context: Square P6. Around post.

Bovine leather.

Impressions/remains after metal fittings along rim, and a chape. Possibly for some kind of weapon-knife (seax).

**Cat. no. 225 BRM 0/4648**



**Sheath, fragment**

Type D2 1170/71–1198  
L 180mm W 34mm T 1mm  
Context: Square I12. Fillmasses/dumped  
Bovine leather probably.  
Side seam, riveted.

**Cat. no. 226 BRM 0/18123**



**Sheath**

Type D2 1198–1248 (over 1198)  
L 280mm W 50mm T 1-2mm  
Context: Square K11. West of caisson 91.  
Ovri-caprine leather probably (goat probably).  
Riveted with several metal fittings preserved. Probably for some kind of weapon-knife (seax).



**Cat. no. 227 BRM 346/4683**



**Sheath, upper part of handle-part, front, missing**

Type D2 c. 1200–c. 1300

L 190mm W 38mm T 1mm

Context: in layer 176.

Ovri-caprine leather (goat).

Rivets/fittings along rim. Peculiar extra band of leather along rim. Chape probably reuse of belt strap.

**Cat. no. 228 BRM 0/82126**



**Sheath, fragment**

Type D2 1248–1332

L 280mm W 55mm T 2mm

Context: Square O9. Below building 174.

Ovri-caprine leather probably (goat probably).

Riveted side-seam. Cut and slashed. Probably for some kind of weapon-knife (seax).

**Cat. no. 229 BRM 110/1120**



**Sheath, partly cut**

Type D2            1248–c. 1400  
L 200mm          W 38mm          T 2–3mm  
Context: in layer 110.  
Bovine leather.  
Riveted side-seam, chape (only impression left).

**Cat. no. 230 BRM 110/2415**



**Sheath, partly cut**

Type D2            1248–c. 1400  
L 215mm          W 35mm          T 1mm  
Context: in layer 147, fundament 32.  
Bovine leather.  
Riveted side seam (impressions left). Two rows of slits below mouth, probably for suspension.

**Cat. no. 231 BRM 90/554/1**



**Sheath, mouth missing**

Type D2 1393–1476

L 135mm W 33mm T 1mm

Context: in layer 25.

Ovri-caprine leather probably (goat probably).

Riveted side seam at handle.

**Cat. no. 232 BRM 0/4708**



**Cut scabbard leather, fragment**

Type E 1170/71–1198

L 395mm W 59mm T 1mm

Context: Square I12. Fillmasses/dumped.

Bovine leather.

Butted side-of-back seam, edge-flesh stitch-holes.



**Cat. no. 233 BRM 0/10016**



**Cut scabbard leather, fragment**

Type E 1170–1198 (below 1198)

L 195mm W 51mm T 1mm

Context: Square K11. In layer 204. Fillmasses.

Bovine leather.

Closed centre-of-back seam, flesh-grain stitch-holes. Flesh-grain stitches at upper end, has been resewn. Four 15mm long slits along seam, 2 at each side.

**Cat. no. 234 BRM 0/10249**



**Cut scabbard leather, fragment**

Type E 1170–1198 (below 1198)

L 350mm W 44mm T 1mm

Context: Square I11. In layer 233. Fillmasses.

Bovine leather.

Butted side-of-back seam, edge-flesh stitch-holes. The scabbard was treated with Lederweicher for photography.

**Cat. no. 235 BRM 0/22554**



**Cut upper part of scabbard**

Type E 1170/71–1198 (below 1198)

L 260mm W 54mm T 1mm

Context: Square K11. In layer 603.

Bovine leather probably.

Butted side-of-back seam, edge-flesh stitch-holes. Stitch-holes at mouth, slits for suspension in front and back.

**Cat. no. 236 BRM 0/31690/12**



**Cut scabbard leather, fragment**

Type E 1170–1198 (about 1198)

L 150mm W 55mm T 1–2mm

Context: Square L6. In bulwark/fundament.

Bovine leather.

Butted centre-of-back seam, edge-grain stitch-holes.

**Cat. no. 237 BRM 0/88695**



**Cut scabbard leather, fragment**

Type E 1170/71–1198  
L 98mm W 53mm T 1mm  
Context: Square L12. In fundament/bulwark  
Bovine leather.  
Butted side-of-back seam, edge-flesh stitch-holes.

**Cat. no. 238 BRM 0/18858/2**



**Cut scabbard leather, fragment**

Type E 1198–1248 (below 1248)  
L 265mm W 43mm T 1mm  
Context: Square K9. North of caisson 60.  
Bovine leather.  
Butted side-of-back seam, edge-flesh stitch-holes.



**Cat. no. 239 BRM 0/20709**



**Cut tip of scabbard leather**

Type E 1198–1248  
L 185mm W 43mm T 1mm  
Context: Square K10. In layer 459.  
Bovine leather probably.  
Butted side-of-back seam, edge-flesh stitch-holes.

**Cat. no. 240 BRM 0/30540/8**



**Cut scabbard leather, fragment**

Type E 1198–1248 (over 1198)  
L 136mm W 45mm T 1mm  
Context: Square K5. In layer 785.  
Bovine leather.  
Butted centre-of-back seam, edge-flesh stitch-holes.

**Cat. no. 241 BRM 0/36115/4**



**Cut mouth of scabbard leather**

Type E 1198–1248 (below 1248)

L 156mm W 67mm T 1mm

Context: Square K4.

Bovine leather probably.

Closed centre-of-back seam, flesh-grain stitch-holes. Slits for suspension in front and back.

**Cat. no. 242 BRM 0/43124**



**Cut tip of scabbard leather**

Type E 1198–1248 (below 1248, alternative dating: 1170/71–1198)

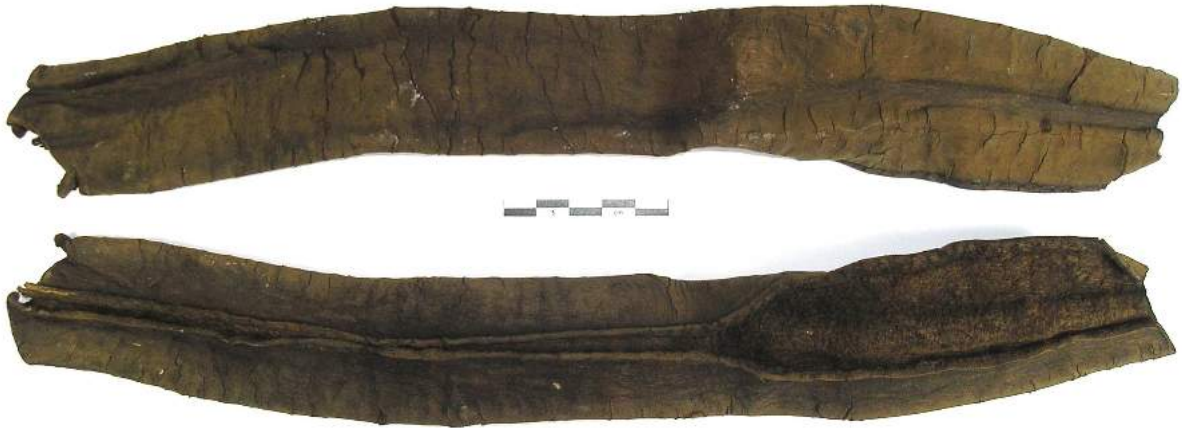
L 220mm W 42mm T 1mm

Context: Square P5.North of passageway

Ovri-caprine leather probably (goat probably).

Butted centre-of-back seam, edge-flesh stitch-holes.

**Cat. no. 243 BRM 76/11944**



**Cut scabbard leather, fragment**

Type E 1198–1248  
L 360mm W 44mm T 1mm  
Context: in passageway 2 in fillmasses.  
Bovine leather.  
Butted centre-of-back seam, edge-grain stitch-holes.

**Cat. no. 244 BRM 76/11953**



**Cut (mouth?) scabbard leather**

Type E 1198–1248  
L 140mm W 70mm T 1mm  
Context: in passageway 2 in fillmasses.  
Ovri-caprine leather (goat).  
Butted centre-of-back seam, edge-flesh stitch-holes. The fragment resembles a mouthpiece, but is roughly cut.  
More probably, it is a result of removing the leather from the wooden plates of the scabbard.



**Cat. no. 245 BRM 0/2793/5**



**Cut mouth of scabbard leather**

Type E 1248–1332  
L 235mm W 60mm T 1mm  
Context: Square H12. In caisson 95 (fillmasses).  
Ovri-caprine leather.

Closed centre-of-back seam, flesh-grain stitch-holes. Holes and slits may stem from suspension.

**Cat. no. 246 BRM 0/3465**



**Cut scabbard leather, fragment**

Type E 1248–1332  
L 400mm W 50mm T 1mm  
Context: Square I12. In caisson 93 (fillmasses).  
Bovine leather probably.

Closed centre-of-back seam, flesh-grain stitch-holes. Earlier accession number: BR 1752.

**Cat. no. 247 BRM 0/3469**



**Cut tip of scabbard leather**

Type E 1248–1332

L 250mm W 47mm T 1mm

Context: Square I12. In caisson 93 (fillmasses).

Bovine leather.

Closed diagonal seam, flesh-grain stitch-holes. Earlier accession number: BR 1751.

**Cat. no. 248 BRM 0/3951**



**Cut mouth of scabbard leather**

Type E 1248–1332 (over 1248)

L 136mm W 59mm T 1mm

Context: Square K12. Fillmasses.

Bovine leather.

Closed centre-of-back seam, flesh-grain stitch-holes. Stitch-holes at mouth, slits for suspension in front and back.

**Cat. no. 249 BRM 0/7696**



**Cut tip of scabbard leather**

Type E 1248–1332 (below 1332)  
L 250mm W 44mm T 1mm

Context: Square H11. In caisson 103.

Bovine leather.

Closed centre-of-back diagonal seam, flesh-grain stitch-holes.

**Cat. no. 250 BRM 0/11154**



**Cut tip of scabbard leather**

Type E 1248–1332  
L 225mm W 40mm T 1–2mm

Context: Square H11. In caisson 103.

Bovine leather.

Closed centre-of-back seam, flesh-grain stitch-holes. The back seam continues around the tip up front, app. 8 cm.



**Cat. no. 251 BRM 0/11427/2**



**Cut scabbard leather, fragment**

Type E 1248–1332 (below 1332)  
L 162mm W 56mm T 1mm  
Context: Square H11. In caisson 102.  
Bovine leather.  
Closed side-of-back seam, flesh-grain stitch-holes.

**Cat. no. 252 BRM 0/12558**



**Cut scabbard leather, fragment**

Type E 1248–1332  
L 175mm W 52mm T 1mm  
Context: Square G11. In layer 406.  
Bovine leather probably.  
Butted centre-of-back seam, edge-flesh stitch-holes. 95mm long slit along one rim, re sewn with flesh-grain stitching. Repair or part of suspension arrangement.

**Cat. no. 253 BRM 0/16276**



**Cut mouth of scabbard leather**

Type E 1248–1332 (below 1332)

L 320mm W 56mm T 1mm

Context: Square L9. In passageway.

Ovri-caprine leather (goat).

Closed centre-of-back seam, flesh-grain stitch-holes. Stitch-holes at mouth, slits for suspension in front and back.

**Cat. no. 254 BRM 0/17342**



**Cut scabbard leather, fragment**

Type E 1248–1332 (below 1332)

L 220mm W 56mm T 1mm

Context: Square I10. In caisson 108.

Bovine leather.

Closed centre-of-back seam, flesh-grain stitch-holes.

**Cat. no. 255 BRM 0/22363/2**



**Cut scabbard leather, fragment**

Type E 1248–1332 (about 1332)

L 92mm W 51mm T 1mm

Context: Square L8. In evesdrop.

Bovine leather.

Closed centre-of-back seam, flesh-grain stitch-holes.

**Cat. no. 256 BRM 0/28645/9**



**Cut mouth of scabbard leather**

Type E 1248–1332 (below 1332)

L 165mm W 67mm T 1–2 mm

Context: Square K6.

Ovri-caprine leather probably (sheep probably).

Closed centre-of-back seam, flesh-grain stitch-holes.

Stitch-holes at mouth, 2 possible slits/holes for suspension in front.



**Cat. no. 257 BRM 0/36185/4**



**Cut scabbard leather, fragment**

Type E 1248–1332 (below 1332)

L 380mm W 45mm T 1mm

Context: Square I4. In building 214.

Bovine leather.

Butted centre-of-back seam, edge-flesh stitch-holes.

**Cat. no. 258 BRM 0/40612**



**Cut scabbard leather, fragment**

Type E 1248–1332 (over 1248)

L 260mm W 48mm T 1mm

Context: Square N5. Fillmasses.

Bovine leather.

Closed side-of-back seam, flesh-grain stitch-holes.

**Cat. no. 259 BRM 0/87903**



**Cut scabbard leather, fragment**

Type E 1248–1332 (over 1248)

L 180mm W 65mm T 2mm

Context: Square N11. In building 201.

Bovine leather.

Butted centre-of-back seam, edge-grain stitch-holes. Flesh-grain stitches at upper end, has been resewn.

**Cat. no. 260 BRM 110/4787**



**Cut tip of scabbard leather**

Type E 1248–c. 1400

L 145mm W 59mm T 1mm

Context: in layer 180.

Ovri-caprine leather (goat).

Closed centre-of-back seam, flesh-grain stitch-holes.

**Cat. no. 261 BRM 0/1737**



**Cut scabbard leather, fragment**

Type E 1332–1413 (1332–1393)  
L 185mm W 64mm T 1mm

Context: Square G12. In public alley.

Ovri-caprine leather probably (goat probably).

Closed centre-of-back seam, flesh-grain stitch-holes. Flesh-grain stitches at upper end, has been resewn. Possible slits for suspension in back. Earlier accession number: BR 1062.

**Cat. no. 262 BRM 0/7074**



**Cut tip of scabbard leather**

Type E 1332–1413 (over 1332)  
L 290mm W 50mm T 1–2mm

Context: Square H11. South of privy 8.

Bovine leather.

Closed centre-of-back seam, flesh-grain stitch-holes.



**Cat. no. 263 BRM 0/8212**



**Cut scabbard leather, fragment**

Type E 1332–1413 (below 1393)

L 87mm W65mm T 1mm

Context: Square F11. Below bulwark/fundament.

Bovine leather.

Closed centre-of-back seam, flesh-grain stitch-holes. Hole in front, for suspension?

**Cat. no. 264 BRM 0/8353**



**Cut mouth of scabbard leather with lining**

Type E 1332–1413 (over 1332)

L 243mm W 55mm T 2 x 1mm

Context: Square F11. In layer 118.

Bovine leather.

Closed diagonal back seam, flesh-grain stitch-holes. Several slits for suspension in front and back. The fragment has an inner leather lining, protruded with corresponding slits. The upper part of this scabbard has thus probably had a reinforcing outer covering.

**Cat. no. 265 BRM 0/11797/1**



**Cut scabbard leather, fragment**

Type E 1332–1413 (Alternative dating: 1248–1332)

L 106mm W 65mm T 1mm

Context: Square G11. In caisson 106.

Bovine leather.

Closed centre-of-back seam, flesh-grain stitch-holes. Several slits for suspension, back and front.

**Cat. no. 266 BRM 0/11797/2**



**Cut scabbard leather, fragment**

Type E 1332–1413 (Alternative dating: 1248–1332)

L 410mm W 53mm T 1mm

Context: Square G11. In caisson 106.

Bovine leather.

Closed centre-of-back seam, flesh-grain stitch-holes.

**Cat. no. 267 BRM 0/38254**



**Cut mouth of scabbard leather**

Type E 1332–1413 (over 1332)

L 232mm W 56mm T 1mm

Context: Square N6. In passageway.

Bovine leather.

Closed centre-of-back seam, flesh-grain stitch-holes. The scabbard was treated with Lederweicher for photography.

**Cat. no. 268 BRM 0/38503**



**Cut mouth of scabbard leather**

Type E 1332–1413 (over 1332)

L 235mm W 54mm T 1mm

Context: Square M6. In building 435.

Ovri-caprine leather probably (goat probably).

Closed centre-of-back seam, flesh-grain stitch-holes. Stitch-holes at mouth, slits for suspension in front and back.



**Cat. no. 269 BRM 0/48690**



**Cut scabbard leather, fragment**

Type E 1332–1413 (below 1413)

L 300mm W 45mm T 1mm

Context: Square N3. Below building 433, on level with log course 2 in general fill layers.

Bovine leather.

Closed centre-of-back seam, flesh-grain stitch-holes. The leather is folded inwards at the back, giving a double seam.

**Cat. no. 270 BRM 0/48715**



**Cut scabbard leather, fragment**

Type E 1332–1413 (below 1413)

L 410mm W 51mm T 1mm

Context: Square N3. Below building 433, on level with log course 2 in general fill layers.

Bovine leather probably.

Closed centre-of-back seam, flesh-grain stitch-holes. Flesh-grain stitches at upper end, has been resewn.

Cat. no. 271 BRM 0/86545



**Cut mouth of scabbard leather**

Type E 1332–1413

L 151mm W 62mm T 2mm

Context: Square M11. In evesdrop

Bovine leather.

Closed centre-of-back seam, flesh-grain stitch-holes. Thread preserved, crudely executed whip-stitch. Flesh-grain stitches at lower end, has been resewn. Parts of the suspension preserved.

**Cat. no. 272 BRM 3/668/2**



**Cut mouth of scabbard leather with lining**

Type E                    after c. 1300  
L 300mm                W 65mm                T 2 x 1mm

Context: in fillmasses.

Bovine leather.

Closed centre-of-back seam, flesh-grain stitch-holes. Several slits for suspension in front and back. The fragment has an inner leather lining. The upper part of this scabbard has thus probably had a reinforcing outer covering.

**Cat. no. 273 BRM 0/95323**



**Cut mouth of scabbard leather**

Type E                    Undatable  
L 186mm                W 68mm                T 1mm

Context: (Bryggen site).

Bovine leather.

Butted centre-of-back seam, edge-flesh stitch-holes. Stitch-holes at mouth, slits for suspension in front and back.



**Cat. no. 274 BRM 0/3537**



**Cut scabbard fragment**

Type F1 1248–1332 (on level 1332, alternative dating: 1332–1413)

L 65mm W 63mm T 1–2mm

Context: Square I12. In public square.

Bovine leather.

Closed centre-of-back seam, flesh-grain stitch-holes. Stamped decoration: Fleur-de-lis in lozenge, fleur-de-lis in square. Earlier accession number: BR 1754.

**Cat. no. 275 BRM 76/20433**



**Cut scabbard fragment**

Type F1 1248–1332

L 590mm W 55mm T 1mm

Context: in layer 39, east of building 33.

Bovine leather.

Closed centre-of-back seam, flesh-grain stitch-holes. Stamped decoration: In front: 4 rows of fleur-de-lis (2 different motifs) and zoomorph. Back: 2 rows of lion and petal.

**Cat. no. 276 BRM 83/4318**



**Cut scabbard leather, tip**

Type F1 1248–1332

L 500mm W 49mm T 1mm

Context: in layer 285.

Bovine leather.

Closed centre-of-back seam, flesh-grain stitch-holes. The back seam continues around the tip up front, app. 4 cm.

Stamped decoration: In front: 2 rows of lions and birds (2 different bird motifs). Back: 2 rows of lion and fleur-de-lis and lion

**Cat. no. 277 BRM 110/2385**



**Cut scabbard fragment**

Type F1 1248–c. 1400

L 90mm T 1–2mm

Context: in layer 135

Bovine leather.

Stamped decoration: Advanced fleur-de-lis in lozenge and in triangle.

Cat. no. 278 BRM 0/1455



**Cut scabbard fragment**

Type F1 1332–1413 (1393–1413)

L 160mm W 64mm T 1–2mm

Context: Square F12. In street deck.

Bovine leather.

Closed centre-of-back seam, flesh-grain stitch-holes. Stamped decoration: 2 rows of fleur-de-lis and one “lion rampant” (stamped lying on right side), both on back and front. Earlier accession number: BR 1005. Previously published: Nøttveit 2006c:51, fig. 3–4.



**Cat. no. 279 BRM 0/1566**



**Cut scabbard leather, 3 fragments**

Type F1 1332–1413 (1332–1393)

L 750mm W 50mm T 1mm

Context: Square G12. In caisson 98 (fillmasses).

Bovine leather.

Closed centre-of-back seam, flesh-grain stitch-holes. Slits for suspension in front and back at the upper fragment.

Stamped decoration (very faint): Rows of rosette motifs and lozenges, front and back. Earlier accession number: BR 1027.

**Cat. no. 280 BRM 0/6793**



**Cut scabbard leather, tip**

Type F1 1332–1413 (below 1413)

L 470mm W 50mm T 1–2mm

Context: Square F11. In bulwark/fundament.

Bovine leather probably.

Closed centre-of-back seam, flesh-grain stitch-holes. The back seam continues around the tip up front, app. 4 cm.

Stamped decoration: Front: 3 rows of antlered animal, fleur-de-lis, and zoomorph, Back: petal and zoomorph.

See cat. no. 286.

**Cat. no. 281 BRM 0/14435, 0/14445, 0/14890**  
Cut scabbard leather, 3 separate fragments



**BRM 0/14435**

Type F1 1332–1413 (below 1413)  
L 90mm T 1mm  
Context: Square L9. In bulwark/fundament.  
Ovri-caprine leather (goat or sheep).  
Stamped decoration: 2 rows fleur-de-lis in square.



**BRM 0/14445**

Type F1 1332–1413 (below 1413)  
L 154mm T 1mm  
Context: Square L9. In bulwark/fundament.  
Ovri-caprine leather (goat or sheep).  
Closed centre-of-back seam, flesh-grain stitch-holes. Stamped decoration: 2 rows fleur-de-lis in square and lion.



**BRM 0/14890**

Type F1 1332–1413 (below 1393)  
L 360mm T 1mm  
Context: Square L10. Under building 346.  
Ovri-caprine leather (goat or sheep). Closed centre-of-back seam, flesh-grain stitch-holes. Stamped decoration: 2 rows fleur-de-lis in square and lion.

**Cat. no. 282 BRM 0/14446**



**Scabbard leather**

Type F1 1332–1413 (below 1413)  
L 815mm W 65mm T 1mm

Context: Square L9.

Unidentified leather type (conservation).

Closed centre-of-back seam, flesh-grain stitch-holes. Decoration: Stamped. In front two rows of faint image, zoomorph. Back: Two rows of lion rampant. The scabbard leather is worn, but removed from the scabbard plates rather intact, not cut/slashed as commonly done. Some part of the tip is missing, but the object is rather complete. Previously published: Nøttveit 2006c:53, fig.8

**Cat. no. 283 BRM 0/26475/9**



**Cut scabbard leather, back-side**

Type F1 1332–1413 (below 1413)  
L 565mm W 22mm T 1mm

Context: Square K4. Fillmasses.

Bovine leather.

Closed centre-of-back seam, flesh-grain stitch-holes. Stamped decoration: Lion.



**Cat. no. 284 BRM 245/1728**



**Cut scabbard leather, back-side**

Type F1 1350–mid/late 15thC  
L 70mm W 57mm T 1mm

Context: in layer 291.

Unidentified leather species (worn).

Closed centre-of-back seam, flesh-grain stitch-holes. Stamped decoration: fleur-de-lis in lozenge.

**Cat. no. 285 BRM 83/1536**



**Cut scabbard fragment**

Type F1 1476–1527  
L 160mm W 43mm T 1mm

Context: in layer 68.

Bovine leather.

Closed centre-of-back seam, flesh-grain stitch-holes. Stamped decoration: the motif is no longer discernable.

**Cat. no. 286 BRM 0/49160**



**Cut scabbard fragment**

Type F1 1476–1702 (redeposited)

L 175mm W 43mm T 1mm

Context: Square L4.

Bovine leather.

Closed centre-of-back seam, flesh-grain stitch-holes. Stamped decoration: 5 different stamps, the same as cat. no. 280. The two fragments probably stem from different scabbards.

**Cat. no. 287 BRM 4/1174/2**



**Cut scabbard fragment**

Type F1 after 1215/25

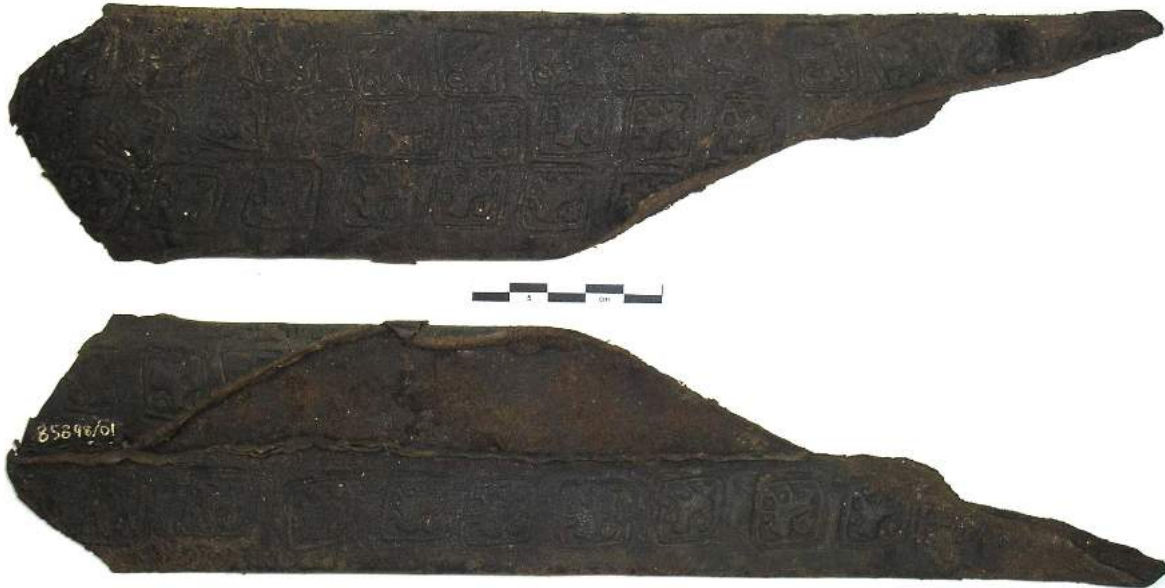
L 67mm W 65mm T 2mm

Context: in fillmasses.

Bovine leather.

Edge-grain stitches at lower end, has been resewn. Stamped decoration: fleur-de-lis in lozenge, supplemented with impressed lines.

**Cat. no. 288 BRM 0/85898**



**Cut scabbard fragment**

Type F1            Undatable

L 310mm        W 68mm        T 1mm

Context: Square L10.

Unidentified leather species.

Closed centre-of-back seam, flesh-grain stitch-holes Stamped decoration: lion, 3 rows in front and two at back.

**Cat. no. 289 BRM 0/4738**



**Cut scabbard fragment**

Type F2            1170/71–1198

L 296mm        W 41mm        T 1mm

Context: Square I12. Fillmasses/dumped Comment:

Bovine leather.

Butted centre-of-back seam, edge-grain stitch-holes. Impressed decoration: Longitudinal lines along rims (faint).



**Cat. no. 290 BRM 0/37743/3**



**Cut scabbard fragment**

Type F2 1248–1332 (below 1332)  
L 500mm W 45mm T 1–2mm

Context: Square I5. In passageway.

Bovine leather probably.

Closed centre-of-back seam, flesh-grain stitch-holes. Flesh-grain stitches at upper end, has been resewn. 30 mm long slit in front has been resewn (repair). Impressed decoration: Longitudinal lines along rims (faint).

**Cat. no. 291 BRM 0/1783**



**Cut scabbard fragment, mouth**

Type F2 1332–1413 (1332–1393)  
L 243mm W 73mm T 1mm

Context: Square G12. In caisson 98 (fillmasses).

Bovine leather.

Closed centre-of-back seam, flesh-grain stitch-holes. Stitch-holes at mouth, slits for suspension in front and back. Impressed decoration: lattice. Earlier accession number: BR 1064.

**Cat. no. 292 BRM 0/11371**



**Cut scabbard fragment**

Type F2 1332–1413 (alternative dating: 1248–1332)

L 265mm W 59mm T 1mm

Context: Square G11. In caisson 106 (possibly 102).

Bovine leather.

Closed centre-of-back seam, flesh-grain stitch-holes. Impressed decoration: Longitudinal lines along rims (faint).

**Cat. no. 293 BRM 0/19561**



**Cut mouth of scabbard leather with lining**

Type F2 1332–1413 (over 1332)

L 260mm W 51mm T 2 x 1mm

Context: Square K8. In building 85.

Bovine leather.

Closed centre-of-back seam, flesh-grain stitch-holes. Stitch-holes at mouth, one possible hole for suspension at back. The fragment has an inner leather lining. The upper part of this scabbard has thus probably had a reinforcing outer covering. Impressed decoration: Geometric pattern supplemented with circles and dots.

**Cat. no. 294 BRM 0/27630/11**



**Cut scabbard fragment, mouth**

Type F2 1332–1413 (below 1413)

L 285mm W 65mm T 1mm

Context: Square K7. In building 390.

Bovine leather.

Closed centre-of-back seam, flesh-grain stitch-holes. Slits for suspension in front and back. Impressed decoration: Geometric pattern.

**Cat. no. 295 BRM 0/48681/6**



**Cut scabbard fragment, mouth**

Type F2 1332–1413 (below 1413)

L 420mm W 55mm T 1mm

Context: Square N3. Below building 433, on level with log course 2 in general fill layers.

Bovine leather.

Closed centre-of-back seam, flesh-grain stitch-holes. Slits for suspension in front and back. Impressed decoration: Geometric pattern. The scabbard was treated with Lederweicher for photography.



**Cat. no. 296 BRM 0/48695**



**Cut scabbard fragments**

Type F2 1332–1413 (below 1413)

Context: Square N3. Below building 433, on level with log course 2 in general fill layers.

Bovine leather.

Closed centre-of-back seam, flesh-grain stitch-holes. Impressed decoration: Longitudinal lines along rims (faint).

**Cat. no. 297 BRM 0/48704**



**Cut scabbard fragment**

Type F2 1332–1413 (below 1413)

L 395mm W 52mm T 1mm

Context: Square N3. Below building 433, on level with log course 2 in general fill layers.

Ovri-caprine leather (goat).

Closed centre-of-back seam, flesh-grain stitch-holes. Impressed decoration: Geometric pattern at the back-side (seam-side).

**Cat. no. 298 BRM 0/48708**



**Cut scabbard fragments**

Type F2 1332–1413 (below 1413)

L 35mm T 1mm

Context: Square N3. Below building 433, on level with log course 2 in general fill layers.

Closed centre-of-back seam, flesh-grain stitch-holes. Impressed decoration: Longitudinal lines along seam (faint).

**Cat. no. 299 BRM 0/48710/1**



**Cut scabbard fragment, tip**

Type F2 1332–1413 (below 1413)

L 110mm W 40mm T 1mm

Context: Square N3. Below building 433, on level with log course 2 in general fill layers.

Bovine leather.

Closed centre-of-back seam, flesh-grain stitch-holes. Impressed decoration: Geometric pattern.

**Cat. no. 300 BRM 0/48710/4**



**Cut scabbard fragment**

Type F2 1332–1413 (below 1413)

L 140mm W 41mm T 1mm

Context: Square N3. Below building 433, on level with log course 2 in general fill layers.

Bovine leather.

Impressed decoration: Geometric pattern.

**Cat. no. 301 BRM 0/48710/5**



**Cut scabbard fragment**

Type F2 1332–1413 (below 1413)

L 270mm W 55mm T 1mm

Context: Square N3. Below building 433, on level with log course 2 in general fill layers.

Closed centre-of-back seam, flesh-grain stitch-holes

Bovine leather.

Impressed decoration: Longitudinal lines along rim.



**Cat. no. 302 BRM 0/48711**



**Cut scabbard fragment**

Type F2 1332–1413 (below 1413)

L 405mm W 33mm T 1mm

Context: Square N3. Below building 433, on level with log course 2 in general fill layers.

Bovine leather.

Impressed decoration: Parallel longitudinal lines along rim.

**Cat. no. 303 BRM 0/48714**



**Cut scabbard fragment**

Type F2 1332–1413 (below 1413)

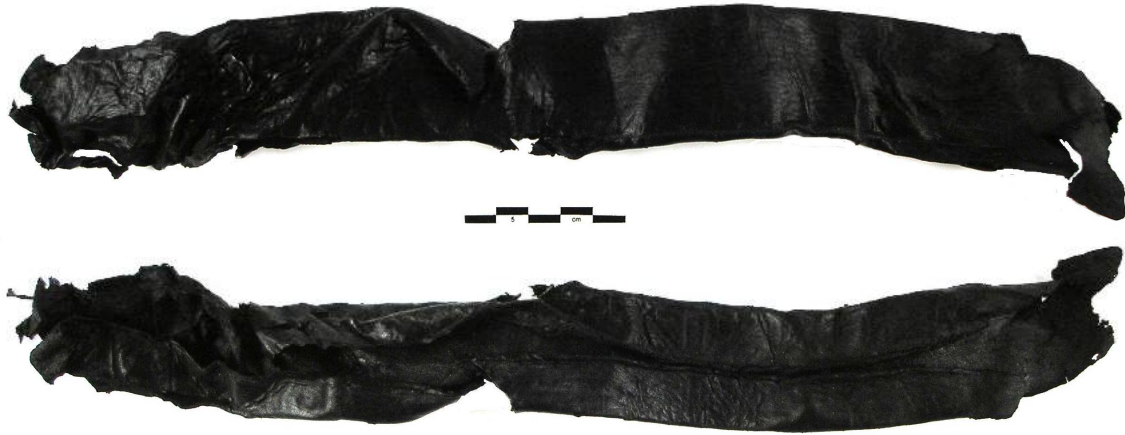
L 470mm W 50mm T 1mm

Context: Square N3. Below building 433, on level with log course 2 in general fill layers.

Bovine leather

Closed centre-of-back seam, flesh-grain stitch-holes. Impressed decoration: Geometric pattern.

**Cat. no. 304 BRM 0/48716**



**Cut scabbard fragment**

Type F2 1332–1413 (below 1413)

L 340mm W 40mm T 1mm

Context: Square N3. Below building 433, on level with log course 2 in general fill layers.

Bovine leather probably.

Closed centre-of-back seam, flesh-grain stitch-holes. Resewn cut at one rim/side (repair or suspension).

Impressed decoration: Geometric pattern at the back-side (seam-side). The scabbard was treated with Lederweicher for photography.

**Cat. no. 305 BRM 0/48717**



**Cut scabbard fragment, mouth**

Type F2 1332–1413 (below 1413)

L 365mm W 60mm T 1mm

Context: Square N3. Below building 433, on level with log course 2 in general fill layers.

Bovine leather.

Closed centre-of-back seam, flesh-grain stitch-holes. Slits for suspension at back (upper front missing)

Impressed decoration: Geometric pattern at the back-side (seam-side).

**Cat. no. 306 BRM 104/980**



**Cut scabbard fragment**

Type F2            1332–1413  
L 185mm        W 49mm        T 1mm

Context: in layer 34, building 11.

Bovine leather.

Closed centre-of-back seam, flesh-grain stitch-holes. Impressed decoration: Longitudinal lines along rim.

**Cat. no. 307 BRM 20/784**



**Cut scabbard fragment**

Type F2            Undatable  
L 210mm        W 41mm        T 1mm

Bovine leather probably.

Closed centre-of-back seam, flesh-grain stitch-holes. Impressed decoration: Longitudinal lines along rim / geometric.



**Cat. no. 308 BRM 0/95321**



**Cut scabbard fragment, mouth**

Type F2            Undatable  
L 520mm        W 48mm        T 1mm

Context: (Bryggen site).

Bovine leather.

Closed centre-of-back seam, flesh-grain stitch-holes. Slits for suspension at front and back. Impressed decoration: Longitudinal lines at front.

**Cat. no. 309 BRM 0/95324**



**Cut scabbard fragment**

Type F2            Undatable  
L 580mm        W 46mm        T 1mm

Context: (Bryggen site).

Bovine leather probably.

Butted side-of-back seam, edge-flesh stitch-holes. Impressed decoration: In front: dragons in floral tendrils, back: heraldic.

**Cat. no. 310 BRM 0/13867**



**Cut scabbard leather, mouth**

Type F3 1332–1413 (below 1393)

L 154mm W 60mm T 1mm

Context: Square L10. Below building 343.

Bovine leather.

Butted centre-of-back seam, edge-grain stitch-holes. Stitch-holes at mouth, slits for suspension in front and back. Incised decoration: Vertical rows below the mouth, not cut as part of suspension. Supplemented with impressed longitudinal lines along rims.

**Cat. no. 311 BRM 0/48687**



**Cut scabbard leather, fragments**

Type F3 1332–1413 (below 1413)

Context: Square N3. Below building 433, on level with log course 2 in general fill layers.

Bovine leather.

Incised decoration: lattice.

**Cat. no. 312 BRM 0/48692**



**Cut scabbard leather, fragments**

Type F3 1332–1413 (below 1413)

Context: Square N3. Below building 433, on level with log course 2 in general fill layers.

Bovine leather.

Flesh-grain stitch-holes. Comment: Several small fragments not pictured. Incised decoration: lattice, heraldic.

**Cat. no. 313 BRM 0/48693**



**Cut scabbard leather, fragments**

Type F3 1332–1413 (below 1413)

Context: Square N3. Below building 433, on level with log course 2 in general fill layers.

Bovine leather.

Closed centre-of-back seam, flesh-grain stitch-holes. Incised decoration: lattice, foliate, heraldic.



**Cat. no. 314 BRM 0/48696**



**Cut scabbard leather**

Type F3 1332–1413 (below 1413)

L 450mm W 58mm T 1mm

Context: Square N3. Below building 433, on level with log course 2 in general fill layers.

Bovine leather.

Closed centre-of-back seam, flesh-grain stitch-holes. Incised decoration: lattice, lettering.

**Cat. no. 315 BRM 0/48697**



**Cut scabbard leather, fragments**

Type F3 1332–1413 (below 1413)

Context: Square N3. Below building 433, on level with log course 2 in general fill layers.

Bovine leather probably.

Flesh-grain stitch-holes. Incised decoration: lattice, foliate. A piece with leather thongs was found with the fragments, and has possibly been part of suspension arrangement. Several smaller fragments are not pictured.

**Cat. no. 316 BRM 0/48699**



**Scabbard, cut/worn**

Type F3 1332–1413 (below 1413)

L 430mm W 40mm T 2–3mm

Context: Square N3. Below building 433, on level with log course 2 in general fill layers.

Leather type not identified.

Closed centre-of-back seam, flesh-grain stitch-holes. Incised decoration: geometric. By-sheath for smaller knife in front. For short sword or large dagger.

**Cat. no. 317 BRM 0/48700**



**Cut scabbard leather**

Type F3 1332–1413 (below 1413)

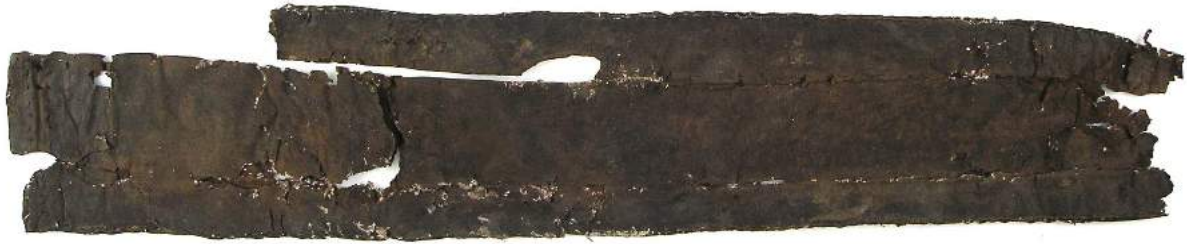
L 315mm W 40mm T 1mm

Context: Square N3. Below building 433, on level with log course 2 in general fill layers.

Bovine leather.

Closed centre-of-back seam, flesh-grain stitch-holes. Incised decoration: geometric, letters spelling (maia).

**Cat. no. 318 BRM 0/48701**



**Cut scabbard leather**

Type F3 1332–1413 (below 1413)

L 565mm W 55mm T 1mm

Context: Square N3. Below building 433, on level with log course 2 in general fill layers.

Ovri-caprine leather (goat).

Closed centre-of-back seam, flesh-grain stitch-holes. Stitch-holes and slits for suspension both in front and back, probably just below the mouth. Incised decoration: random geometric graffiti, probably a type E-scabbard that has been secondarily decorated. The scabbard was treated with Lederweicher for photography.

**Cat. no. 319 BRM 0/48702**



**Cut scabbard fragments**

Type F3 1332–1413 (below 1413)

Context: Square N3. Below building 433, on level with log course 2 in general fill layers.

Bovine leather.

Closed centre-of-back seam, flesh-grain stitch-holes. Incised decoration: Geometric pattern in front, incised/impressed at back (faint). The scabbard was treated with Lederweicher for photography.



**Cat. no. 320 BRM 0/48710/3**



**Cut scabbard leather**

Type F3 1332–1413 (below 1413)

Context: Square N3. Below building 433, on level with log course 2 in general fill layers.

Bovine leather.

Incised decoration: geometric or floral (faint).

**Cat. no. 321 BRM 0/48718**



**Cut scabbard leather**

Type F3 1332–1413 (below 1413)

Context: Square N3. Below building 433, on level with log course 2 in general fill layers.

Bovine leather.

Incised decoration: geometric or floral (faint), supplemented with impressing.

**Cat. no. 322 BRM 0/48721**



**Cut scabbard leather**

Type F3 1332–1413 (below 1413)

L 357mm W 50mm T 1mm

Context: Square N3. Below building 433, on level with log course 2 in general fill layers.

Bovine leather.

Centre-of-back seam. Incised decoration: Foliate, supplemented with impressing. Decorated on the back-side (seam-side). Mostly front-side preserved.

**Cat. no. 323 BRM 0/48722**



**Cut scabbard leather**

Type F3 1332–1413 (below 1413)

L 110mm W 26mm T 1mm

Context: Square N3. Below building 433, on level with log course 2 in general fill layers.

Bovine leather.

Closed centre-of-back seam, flesh-grain stitch-holes. Incised decoration: Geometric, foliate, and supplemented with impressing.

**Cat. no. 324 BRM 0/10048**



**Cut scabbard leather**

Type F3 1476–1702

L 260mm W 45mm T 2mm

Context: Square H11.

Bovine leather.

Closed centre-of-back seam, flesh-grain stitch-holes. Incised decoration: foliate, lines, heraldic, supplemented with impressing.

**Cat. no. 325 BRM 0/48710/2**



**Cut scabbard leather, tip**

Type F4 1332–1413 (below 1413)

L 170mm W 50mm T 1mm

Context: Square N3. Below building 433, on level with log course 2 in general fill layers.

Bovine leather.

Closed centre-of-back seam, flesh-grain stitch-holes. Embossed ridge in front, going from the tip (longer than 100mm).



**Cat. no. 326 BRM 0/45141/3**



**Sheath**

Indefinable 1120–1170/71 (about 1170/71)

L 155mm W 25mm T 1mm

Context: Square O5. South of caisson 35.

Leather type not identified (worn).

Butted diagonal seam, flesh-grain stitch-holes. Imprint after wooden blade protection.

**Cat. no. 327 BRM 0/45983**



**Sheath, reuse of shoe**

Indefinable 1120–1170/71 (below 1170/71)

L 235mm W 37mm T 1mm

Context: Square O5.

Ovri-caprine leather (goat).

Closed seam with leather thongs. Previously published: Hansen: 2005:191, fig. 50b.

**Cat. no. 328 BRM 0/46284**



**Sheath/scabbard**

Indefinable 1120–1170/71 (below 1170/71)

L 466mm W 37mm T 1mm

Context: Square N5. North of caisson 37.

Bovine leather.

Closed centre-of-back seam, flesh-grain stitch-holes. Probably intended for long pointed object.

**Cat. no. 329 BRM 0/77998**



**Sheath**

Indefinable 1248–1332 (alternative dating: 1198–1248)

L 166mm W 33mm T 1mm

Context: Square N2. In well 10.

Leather type not identified (conservation).

Closed side-seam with flesh-grain stitch-holes. Slits on handle-part indicate northeast European origin.

**Cat. no. 330 BRM 0/1019**



**Sheath**

Indefinable 1332–1413 (1393–1413)  
L 180mm W 55mm T 1mm  
Context: Square F12. In fundament, building 316.  
Bovine leather.  
Closed side-seam of flesh-grain stitch-holes.

**Cat. no. 331 BRM 0/14436**



**Sheath**

Indefinable 1332–1413 (below 1413)  
L 143mm W 55mm T 1mm  
Context: Square L9. In bulwark/fundament.  
Bovine leather.  
Closed side-seam of flesh-grain stitch-holes (both rims).



**Cat. no. 332 BRM 0/64892**



**Sheath**

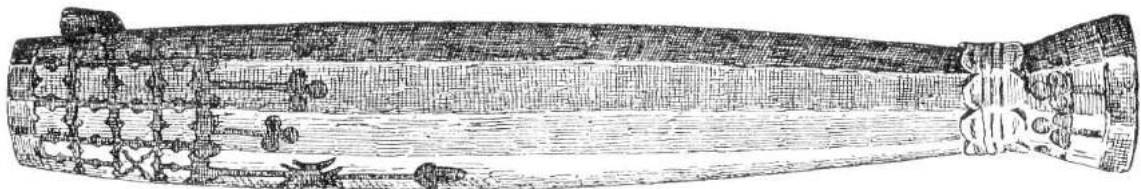
Indefinable 1332–1413 (over 1332)  
L 186mm W 45mm T 1–2mm

Context: Square O4. In well 2.

Bovine leather.

Slits and leather band on handle-part indicate northeast European origin.

**Cat. no. 333 B 6385 f**



(after Grieg 1933: fig. 217)

**Wooden sheath with pewter fittings**

Undated

L 195mm

Context: Old find, southern part of Bryggen.

Previously published: Grieg 1933: 245–246.

**Cat. no. 334 B 6385h**



**Wooden sheath**

Undated

L 85mm      W 23mm      T 4mm

Context: Old find, southern part of Bryggen.

**Cat. no. 335 B 6553a**



**Wooden sheath with pewter fittings**

Undated

L 245mm      W 36mm

Context: Old find from Strandsiden, the Wallendahl property.

Previously published: Grieg 1933: 246.

**Cat. no. 336 B 6385g**



**Brass sheath**

L 72mm      W 22mm      T 2–5mm

Context: Old find, southern part of Bryggen.

The sheath has 2 openings at the mouth, perhaps intended for a dining set or a dagger with by-knife.

**Cat. no. 337 BRM 39/529**



**Chape**

Medieval/post-medieval?

L 75mm W 40mm

Old find from Bergenhus (G. Fischer).

**Cat. no. 338 no number**



**Chape (dagger)**

Undated

L 31mm W 36mm

Probably from Bergen.

**Cat. no. 339 MA 421**



**Chape, bone**

Undated

Old find, probably from Bergen.

Previously published: Grieg 1933: 291



Cat. no. 340

BRM 0/38583



**Fitting, metal** (with remains of leather)

1332–1413 (over 1332)

L 40mm            W27mm

Context: Square N6 in fillmasses

Cat. no. 341

BRM 237/5444



**Fitting, copper** (with remains of leather)

Undated

L 36mm            W 35mm